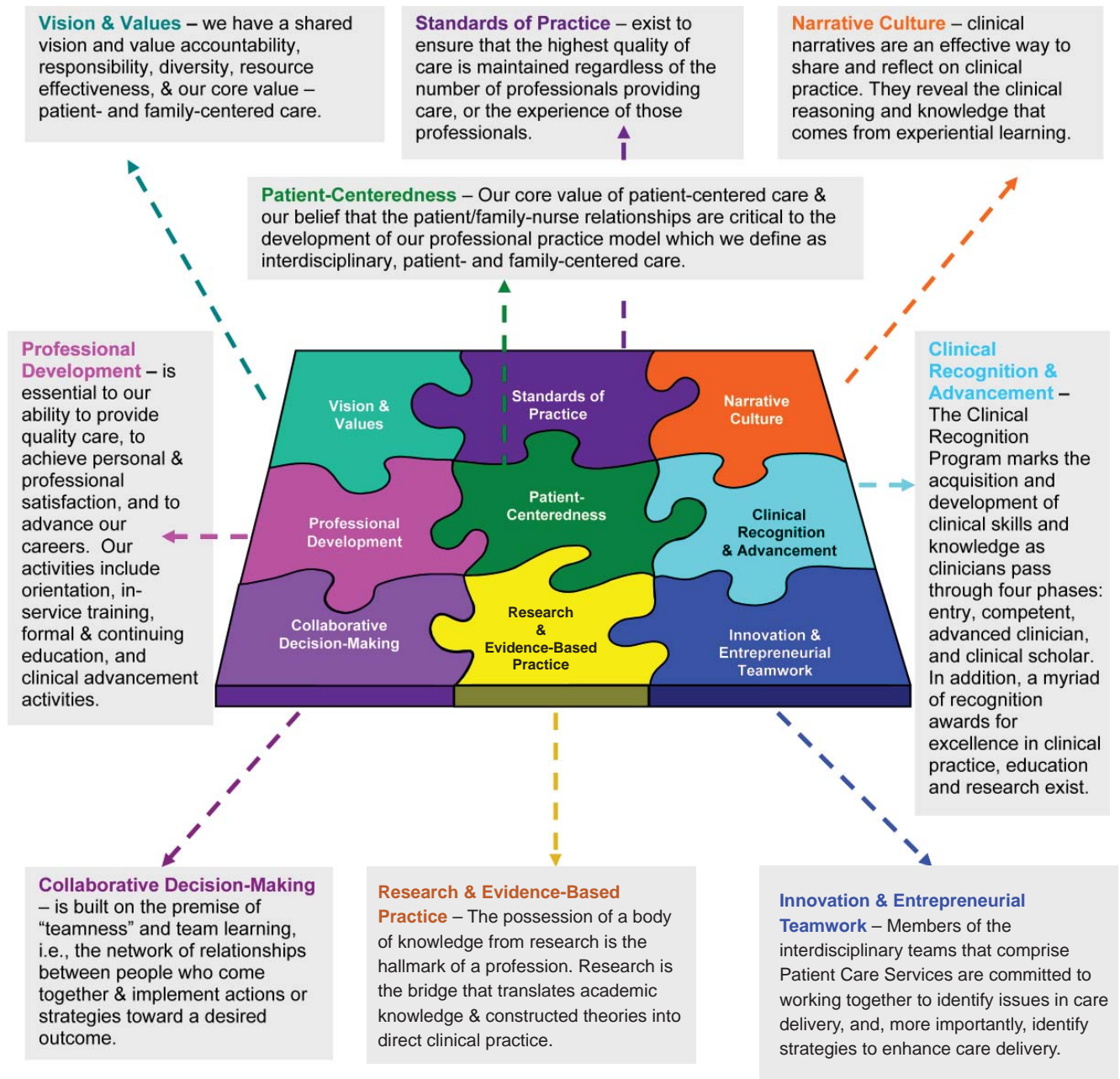


MGH Professional Practice Model



Q: Can you describe how the components of the Professional Practice Model are present in your practice?

Patient Care Delivery Model

The vision statement for Patient Care Services states, “Patients are our primary focus, and the way we deliver care reflects that focus every day.” The patient care delivery model at MGH is **interdisciplinary, patient- and family-centered care**. The person, family/group are viewed as a unique, dynamic and complex whole, who experience health in a personal way, informed by

their own history and cultural experiences. Patient- and family-centered care optimizes this relationship and creates a care-delivery system that is centered around the patient. A philosophy of relationship-based care guides our practice, emphasizing basic tenets of the caregiver’s relationship with: Self (self-awareness); Team/Colleagues; Patient and Family; and Environment of Care

Q: Can you describe how the Patient Care Delivery Model is practiced on your unit?