

EXCELLENCE • EDUCATION •

UNITY OUTREACH • CLINICAL

CAL EXCELLENCE • EDUCATIO

• EDUCATION • RESEARCH • C

CLINICAL EXCELLENCE • EDU



• COMMUNITY OUTREACH • CL

EXCELLENCE • EDUCATION • RE

• RESEARCH • COMMUNITY OU

REACH • CLINICAL EXCELLENCE

ENCE • EDUCATION • RESEARCH

CARING IN ACTION • ADVANCING OUR MISSION



MASSACHUSETTS
GENERAL HOSPITAL

PATIENT CARE SERVICES

2006

PATIENT CARE SERVICES

DISCIPLINES

NURSING
CHAPLAINCY
MEDICAL INTERPRETER SERVICES
OCCUPATIONAL THERAPY
ORTHOTICS AND PROSTHETICS
PHYSICAL THERAPY
RESPIRATORY THERAPY
SOCIAL SERVICES
SPEECH, LANGUAGE & SWALLOWING DISORDERS
AND READING DISABILITIES

PROGRAMS

CANCER RESOURCE ROOM
CARING HEADLINES
CHILD PROTECTION CONSULTATION TEAM
DIVERSITY
FINANCIAL MANAGEMENT SYSTEMS
HAVEN – HELPING ABUSE AND
VIOLENCE END NOW
INFORMATION AMBASSADORS
INFORMATION SYSTEMS
INTERNATIONAL PATIENT CENTER
LADIES VISITING COMMITTEE RETAIL SHOPS
MGH CarePages
MGH QUIT SMOKING SERVICE

PATIENT AND FAMILY LODGING
OFFICE OF PATIENT ADVOCACY
OFFICE OF QUALITY AND SAFETY
SYSTEMS IMPROVEMENT
THE INSTITUTE FOR PATIENT CARE
· THE CENTER FOR INNOVATIONS IN CARE DELIVERY
· THE MAXWELL & ELEANOR BLUM PATIENT AND FAMILY
LEARNING CENTER
· THE NORMAN KNIGHT NURSING CENTER FOR CLINICAL
& PROFESSIONAL DEVELOPMENT
· THE YVONNE L. MUNN CENTER FOR NURSING RESEARCH
VOLUNTEER SERVICES

DEAR FRIENDS,

We are celebrating the accomplishments of 2006, and we are acknowledging the outcomes of our collective work to advance our values: *We believe in creating a practice environment that has no barriers, is built on a spirit of inquiry and reflects a culturally competent workforce, supportive of the patient-centered values of this institution.*

Through our work we witness exciting times. We are part of an extraordinary industry—healthcare! It is a privilege and an honor to care for, and about, patients. One can never overstate the incredible dedication and contributions of the people who come together to make up the important work occurring in Patient Care Services (PCS), with our colleagues throughout the hospital and beyond our walls.

Quality and safety remained at the forefront of our agenda as we played a leadership role in several significant initiatives, including the introduction of a Web-based system for reporting safety concerns, which enables everyone within the MGH community to play an active role in the hospital's safety efforts. Our participation in the statewide Patients First initiative advances our belief in transparency in reporting data. In addition, we launched a new effort to become recertified as a Magnet institution. We ended 2006 with a successful recertification by The Joint Commission.

Perhaps our boldest and most far-reaching initiative in 2006 was the launching of The Institute for Patient Care—a next-generation infrastructure for advancing patient care, education and research. The Institute brings together multidisciplinary teams of clinicians and support staff to reshape and redesign the future delivery of healthcare. In addition to incorporating three existing PCS centers, we also received a \$1 million donation to establish a multidisciplinary Center for Innovations in Care Delivery, which is now housed within The

Institute. This Center will bring together teams of caregivers from various disciplines in an environment that promotes the discovery and delivery of advances in patient care.

We also made significant advances within nursing research in 2006, appointing MGH's first nursing researchers and developing a first-of-its-kind Nurse Scientist Advancement Model for doctorally prepared nurses.

This year also saw us extending the reach of our care well beyond the walls of our hospital. Working in partnership with Project HOPE, we continued to support the training of some 200 Iraqi nurses who will staff Basrah Children's Hospital when the doors to the new US-built facility open in the coming year. We are also working with Project HOPE as part of a continuing US humanitarian aid mission to bring healthcare to Bangladesh and Indonesia. And, MGH Nursing remained in the forefront of the Thomas S. Durant Fellowship for Refugee Medicine through our nurses stationed in Rwanda and Indonesia. In an effort to coordinate MGH's various humanitarian efforts, locally and throughout the world, we helped found The Center for Global Health.

As you recall the milestones of 2006, I hope you'll be as proud as I am of the many individual and collective accomplishments. Throughout the past year, MGH PCS continued to set an even higher standard of practice within the numerous disciplines, and challenged the status quo to shape the future of healthcare. As we build upon the work of 2006, I know we will continue to lead the way.

With admiration,



Jeanette Ives Erickson, RN, MS
Senior Vice President for Patient Care and Chief Nurse



CARING IN ACTION

2006

Quality & Safety

INTRODUCING WEB-BASED SAFETY REPORTING

MGH has always been dedicated to ensuring the safest possible environment of care for patients, families, visitors and staff alike. In March 2006, the hospital went “live” with a major safety initiative: a Web-based Safety Reporting system, designed to make it quicker and easier for everyone within the MGH community to play an active role in the hospital’s safety agenda.

Like most hospitals, MGH historically has used a paper-based reporting system to identify safety concerns, ranging from minor spills and mishaps to more serious events such as adverse reactions to medications. While this manual system has fostered an active safety reporting culture throughout MGH, the new Web-based approach is critical to addressing existing and potential problems more immediately, fixing systems issues that could contribute to breakdowns in care and mining data to identify trends to guide future patient safety efforts. It streamlines the handling of safety reports, speeding communication and reducing delays in follow-up and improvement measures.

The same Safety Reporting System is also being introduced at other hospitals within MGH’s parent corporation, Partners HealthCare, to ensure the highest levels of quality, safety and efficiency in patient care throughout the system.

“As patients and families, we put our trust in MGH to provide the safest care possible.”

– Patty Moniello, mother of MGH patient Katharine Moniello



SIMULATION

In 2006, Patient Care Services opened two new state-of-the-art simulation training centers, one in The Norman Knight Nursing Center for Clinical & Professional Development and the other strategically located adjacent to the PCS Office of Quality and Safety, The Yvonne L. Munn Nursing Research Center and The Center for Innovations in Care Delivery.

Each simulation site features lifelike mannequins that can be computer operated to emit vocal sounds, breathing sounds and cardiac rhythms that mimic particular medical events, such as a sudden drop in blood pressure or a heart attack. Staff are able to train individually and in teams in a scenario within which no actual patients can be harmed. The result is a supportive and safe learning environment that promotes professional development, teaching and testing innovations in practice.

Advancing Care

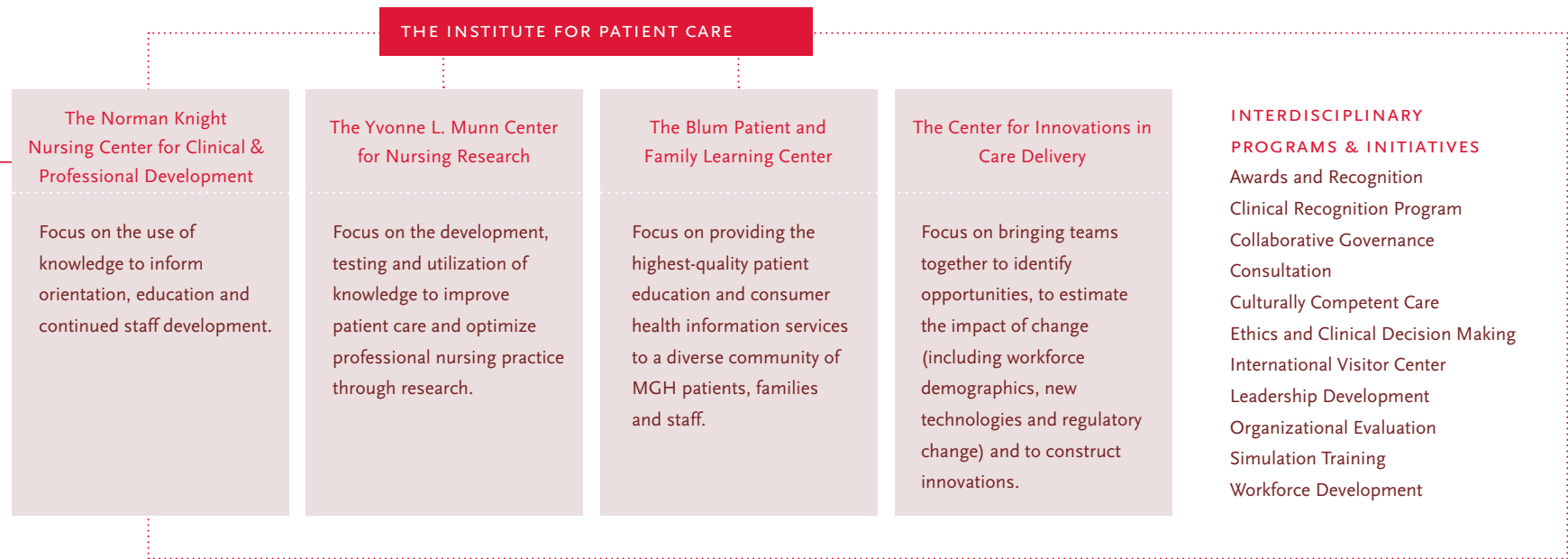
THE INSTITUTE FOR PATIENT CARE

MGH Patient Care Services assumed a bold agenda for shaping the future delivery of patient care with the 2006 launch of The Institute for Patient Care. The Institute represents a first-of-its-kind, multidisciplinary initiative, designed to bring together all disciplines to creatively innovate and generate new ideas to advance our core mission of patient care, education and research. The Institute supports collaboration between well-established PCS programs and centers—The Norman Knight Nursing Center for Clinical & Professional Development, The Yvonne L. Munn Center for Nursing Research, The Maxwell & Eleanor Blum Patient and Family Learning Center, and The Center for Innovations in Care Delivery. This “next-generation” infrastructure is strategically designed to foster teamwork; share best practices; and bring an informed, interdisciplinary approach to patient- and family-centered care.

The formation of The Institute caps a decade of work that is now hardwired into the multidisciplinary PCS culture, including the development of a vibrant professional practice model; formation of a robust structure for collaborative decision making; delivery of cutting-edge professional development programs; establishment of a multimedia learning center for patients and families; and formalization of a comprehensive nursing research program.

“We’re bringing together our work in patient care, education and research to plan for the next year, the next decade and for the legacy we want to leave into the next century.”

– Jeanette Ives Erickson, RN, MS, senior vice president for Patient Care Services and chief nurse



OPPORTUNITIES TO IMPACT CARE DELIVERY

MGH Patient Care Services received a \$1 million anonymous donation in 2006 to launch The Center for Innovations in Care Delivery. The Center is an integral part of the new Institute for Patient Care, with a goal of bringing teams together to identify opportunities; evaluate the impact of proposed changes; and construct and implement innovations to improve the delivery of care, both at MGH and beyond its walls. Spearheaded by director emeritus Edward Coakley, RN, and Barbara Blakeney, RN, MS, immediate past president of the American Nurses Association and an innovations specialist, The Center for Innovations in Care Delivery brings interdisciplinary research and professional development opportunities to all disciplines within Patient Care Services, while creating new models and mechanisms to advance the delivery of care.

Collaborative Governance

SHAPING THE PROFESSIONAL PRACTICE ENVIRONMENT

Collaborative governance was established at MGH in 1997 to ensure that Patient Care Services clinicians have a strong voice in shaping the professional practice environment. This structure places the authority, responsibility and accountability for patient care with practicing clinicians, integrating clinical staff into the formal decision-making process within PCS. Throughout 2006, the seven Collaborative Governance committees contributed to multiple outcomes. Here is just a sampling...

Diversity Steering The PCS Diversity Committee hosted its most successful educational offering, focusing on the unique healthcare needs of the Gay, Bisexual, Lesbian, Transgender (GBLT) community, in a presentation titled “Caring for the invisible patient.” The discussion raised awareness about relevant GBLT issues and provided resources for caring for this specific patient population.

Ethics in Clinical Practice Advanced directives remain an important and sensitive topic within healthcare. In an effort to inform and begin a dialogue with patients, the Ethics Committee developed advanced care planning brochures that are now given to patients as part of their admission packet on inpatient units and at other key areas within the hospital such as the Pre-Admission Testing Area. Nearly 20,000 of these brochures were distributed in 2006.

Nursing Practice This committee evaluates and approves nursing procedures, as well as current and new practices, and existing and proposed products based on patient safety, efficiency and cost-effectiveness criteria. This year the group contributed to decision making on an array of equipment enhancements and purchases, including portable bed alarms to improve surveillance of patients at high risk for fall; proposed patient beds with state-of-the-art pressure-relieving mattresses, exit alarms and built-in scales; new furniture for patient rooms; new specimen collection bags; and a trial of new gloves. They likewise reviewed and approved policies and guidelines that impacted practice, including the administration of medications, the process for online safety reporting, vital sign changes for blood transfusions and universal respiratory care procedures.



Nursing Research The committee hosted its annual Research Day, featuring 40 posters displayed throughout the hospital's main campus, representing work from original research, research utilization and performance improvement projects. Three research teams presented the results of their Yvonne L. Munn Nursing Research Award-winning grant-funded studies. Munn Visiting Professor Loretta Sweet Jemmont, RN, PhD, FAAN, gave an inspiring presentation about innovations in health promotion, and the annual Munn Nursing Research Award was presented.

Patient Education In an effort to help clinicians efficiently and effectively locate important patient education materials—particularly for those with low health literacy—the committee developed a Web site that houses a variety of resources for our patients and families. Launched in July 2006, the site was accessed by nearly 400 unique visitors in its initial three months alone.

Quality Throughout 2006, the Quality Committee members learned and applied the concepts of root cause analysis to their goal of making MGH as safe as possible for patients, families and staff. They promoted the use of interdisciplinary teams to enhance a safe environment of care, influencing numerous initiatives including the Pain Management Program, Smart Pumps Project, and new bar-coded ID bands for patient safety.

Staff Nurse Advisory This committee is designed specifically to enhance communication between staff nurses and the chief nurse. Topics this year included a dialogue about important patient care delivery issues, legislation impacting the profession, the image of the nurse, and service enhancements, as well as the MGH Department of Nursing's recruitment advertising and recruitment initiatives for nurses and support staff.

Nursing Research

ADVANCING NURSING RESEARCH

Research represents an integral part of the MGH mission and Patient Care Services' Professional Practice Model. During 2006, MGH nursing research achieved several exciting milestones that will dramatically impact patient care delivery well into the future. We witnessed history in the making.

The Munn Center is today strategically positioned to advance nursing research and foster a spirit of inquiry within the practice environment. Through the generosity of Yvonne L. Munn, former associate general director and director of nursing, we are able to advance our research agenda and provide opportunities for nurses across roles and settings to participate in research.

We developed a formal program of nursing research that offers opportunities to all nurses, including participating in the Nursing Research Committee and Nursing Research Journal Club, identifying and developing ideas for research studies, securing research funding through the Yvonne L. Munn Nursing Research Awards, and attending and presenting at grand rounds.

We also formalized a novel Nurse Scientist Advancement Model for doctorally prepared nurses that supports the development of nurses as researchers. Doctorally prepared nurses are supported as associate nurse scientists, nurse scientists and senior nurse scientists. Through protected time and mentorship, the program is designed to give doctorally prepared nurses the opportunity to contribute to the development of nursing knowledge, and it is tailored to meet the particular needs of each clinician or researcher throughout their research careers.

“Nursing research is well positioned to change healthcare—locally, nationally and internationally.”

—Dorothy A. Jones, EdD, RNC, FAAN, director of The Yvonne L. Munn Center for Nursing Research



THE YVONNE L. MUNN CENTER FOR NURSING RESEARCH

The Munn Center made history in 2006 with the hiring of the Department of Nursing's first nurse researchers, each with an established record of funded research in specific areas of nursing inquiry. This represents a revolutionary program and a milestone in the evolution of the Munn Center.

Still in its early developmental stages, the scope and vision of the Munn Center continues to be shaped. Moving forward, the work in research, education and patient care will be realigned to ensure an ongoing legacy of excellence and innovation. Opportunities to engage in scientific inquiry and to advance the research agenda to improve patient care will remain the priorities. Staff will continue to ask "Why?" and persevere in their search for answers.

Global Healthcare

INTERNATIONALLY RECOGNIZED HEALTHCARE ORGANIZATION

Not long ago, the communities we served were primarily located in nearby neighborhoods and immediate surroundings. Today, the world around us is rapidly changing, and along with it, our scope of responsibility. As an internationally recognized healthcare organization, we are increasingly called upon to expand the reach of our mission—to care for the medically underserved and victims of disaster wherever they might be—throughout the country and the world.

Thanks to a relationship formed with Project HOPE that began in 2004, MGH this year became very involved with a major venture in Iraq. Working with Project HOPE and the US Agency for International Development, Jeanette Ives Erickson, RN, MS, senior vice president for Patient Care Services and chief nurse, served as senior nurse consultant on an initiative to build and staff a pediatric oncology hospital—Basrah Children's Hospital in southern Iraq. In that role, she is responsible for mentoring the hospital's chief nurse, Sukaina Matter, RN, and ensuring that the hospital's Iraqi nurses are appropriately trained and prepared to provide high-quality, specialized care to children, despite cultural differences and the challenges of an ongoing war. This work was supported by the nurses within the MassGeneral Hospital for Children and MGH Interpreter Services.

In 2006, Ives Erickson's work brought her to the King Abdullah Hospital in Jordan and the Royal Hospital of Muscat in Oman, where more than 200 nurses are being trained for their upcoming Basrah assignments. She had an opportunity to review the curriculum, talk with Iraqi nurses, exchange thoughts and ideas, and get a sense of the progress being made in preparing these nurses to practice in oncology nursing. Logistical and cultural challenges aside, it is hoped that Basrah Children's Hospital will offer a source of healing and renewal for the Iraqi people.



“I’m leaving Boston with as much information as I can carry. My goal is to guide the nursing staff of Basrah Children’s Hospital to provide the best care possible for Iraq’s children...”

—Sukaina Matter, RN, chief nurse, Basrah Children’s Hospital, Iraq

Donations in Action

SUPPORTING PATIENT CARE SERVICES

Many programs within Patient Care Services are made possible through the support of generous donors. In 2006, MGH Patient Care Services was able to advance several important initiatives thanks to philanthropic support—from launching The Center for Innovations in Care Delivery and building The Norman Knight Nursing Center for Clinical & Professional Development to supporting the advancement of oncology nursing and recognizing excellence among staff.

PROFILE OF A DONATION

Like most of the hospital's oncology patients, Margareta Hausman, when diagnosed with ovarian cancer, quickly became a regular visitor to MGH and its various inpatient units, waiting rooms and treatment areas. There she made a striking observation: Cancer is colorblind and affects people from all backgrounds, races, religions and socioeconomic levels. She also noticed that most providers treating this multicultural patient population looked just like her—white.

“I am an MGH fan for life,” Hausman says. “My healthcare team members were highly skilled, and they also became a sort of extended family to me.”

Her providers were excellent clinicians, but she wondered how she could help bridge the obvious and not-so-obvious cultural barriers that might exist within the healthcare environment for patients from diverse backgrounds.

“We all find comfort being in familiar surroundings, interacting with people with whom we share something in common,” she says. “This can be especially true when we're at our most vulnerable.”



TO SUPPORT THE WORK
OF MGH PATIENT CARE
SERVICES, PLEASE CONTACT:

MGH Development Office
165 Cambridge Street, Suite 600
Boston, MA 02114
tel. 617.726.2200

[https://www.massgeneral.org/donate/
donate.asp?othertext=Patient%20Care](https://www.massgeneral.org/donate/donate.asp?othertext=Patient%20Care)

Mr. and Mrs. Hausman responded by establishing the Hausman Fund to Advance Nursing Workforce Diversity. The fund will support programs that expand the diversity of the MGH nursing staff to better reflect the MGH patient population and the Greater Boston community. Specifically, the Hausmans are supporting the educational needs of three distinct populations of prospective MGH nurses: nursing students at local universities, foreign-born nurses who need US credentials to practice and MGH employees enrolled in a nursing program.

The Hausmans' generous support today will impact care at MGH well into the future.

*“An act of generosity is often the only difference between
what might make a difference in someone’s life and what does.”*

—Deborah Washington, RN, PhDc, director of the Patient Care Services Diversity Program

MILESTONES & YEAR IN REVIEW

2006

2006 MILESTONES

The Patient Care Services Web site features nearly 1,100 pages of resources for staff and outside visitors. In 2006, more than 102,000 unique visitors accessed the site—an average of nearly 560 different visitors per day—and 25 percent of all visitors came looking for educational offerings. WWW.MASSGENERAL.ORG/PCS/



SHIPSHAPE

In May of 2006 colleagues from Project HOPE and the US Navy traveled to Boston to help MGH nurses kick off Nurse Recognition Week in style—with a military cake-cutting ceremony aboard the US Navy hospital ship *Comfort*. Visitors enjoyed a tour of the ship and listened intently as several of their MGH colleagues shared their personal stories of volunteering aboard the ship during humanitarian relief missions, off the coast of Indonesia following a devastating tsunami or along the US Gulf Coast following hurricanes Katrina and Rita.

HISTORIC HONOR FOR MGH NURSE

The dedication of the Jean M. Nardini, RN, Hemodialysis Unit in April 2006 marked an historic moment in MGH history. This was the first time a patient care unit at the hospital was named in honor of an MGH nurse.



Nardini, former nurse manager of the Hemodialysis Unit and member of the MGH community for more than 30 years, lost her battle with cancer in May of 2005. According to the American Nephrology Nurses' Association—of which Nardini once served as president—she was “respected as a leader, mentor, advocate, and teacher. She entered hemodialysis nursing in 1969 when the specialty was in its infancy, and went on to become a nationally recognized expert in the care of patients on hemodialysis.”

Nardini's legacy of outstanding leadership, clinical excellence, collaborative practice, compassion and advocacy lives on through the patient care unit that appropriately bears her name.

SUPPORTING THE ONCOLOGY NURSING SOCIETY

The Oncology Nursing Society's (ONS) 31st Annual Congress was held in Boston in April 2006, with some 6,000 oncology nurses from throughout the country attending. The meeting was originally scheduled to be held in New Orleans, until hurricanes Katrina and Rita interfered. MGH nurses stepped in and played a significant role in organizing, planning and relocating the event.

EXTENDED CARE

When 14-year-old Claudine Humure, pictured with staff nurse Sandra Pugsley, RN, was brought to MGH last year to undergo chemotherapy treatments for osteogenic sarcoma, she left behind family and friends in a Rwandan orphanage. As a holiday project, staff coordinated a drive to collect toys and games to send to the orphanage.



INTERPRETER SERVICES INNOVATION

Providing vital medical interpretation services in more than 75 different languages presents a daunting challenge for MGH's 32 full-time and nearly 80 freelance medical interpreters.

To keep pace with a fast-moving staff in the inpatient setting, Interpreter Services created the I-POP—interpreter phone on a pole. By affixing a Polycorn phone to a modified IV pole, the I-POP can be rolled to a patient's bedside, and within minutes clinical staff can communicate with patients in more than 150 languages via an interpreter. A similar video interpreter system is now being piloted in the outpatient units, allowing clinical staff and the patient both to hear and see a remotely located medical interpreter.

Although face-to-face medical interpretation remains the gold standard of service, the new technology represents a valuable option in many circumstances, reducing wait times and ensuring around-the-clock interpretation in virtually every language.



PROMOTING THE IMAGE OF NURSING

In October 2005, *Boston Globe* readers got a rare inside look at nursing in an MGH Intensive Care Unit (ICU)

through a four-part series

titled "Critical Care: The Making of an ICU Nurse."

In 2006, MGH Nursing received three national honors for promoting the powerful story, including the prestigious American Academy of Nursing Media Award, The Center for Nursing Advocacy Golden Lamp Award, and the Nonprofit PR Award for Media Relations. And, with support from the Johnson & Johnson Campaign for Nursing's Future initiative, reprints of the series were mailed to high school science teachers and nursing school deans throughout the country, helping to educate the next generation of providers.

LOURDES "LULU" SANCHEZ received the 2006 Ernesto Gonzalez Award for Outstanding Service to the Latino Community for her contributions to Latino-based initiatives within and outside MGH. She is pictured with Dr. Gonzalez, for whom the award is named.



2006 MILESTONES



Two MGH nurses received Durant Fellowships in Refugee Medicine to assist in the prevention and treatment of disease among refugees in Rwanda and Southeast Asia. The Durant Fellowship honors the legacy of respected MGH physician and humanitarian Thomas S. Durant, MD.

LUCINDA LANGENKAMP, RN, spent eight months delivering healthcare to the rural poor in the Rwinkwavu and Kirehe provinces of southeastern Rwanda. Working as a pediatric nurse, she provided aid to young Rwandans suffering from malnutrition, HIV, malaria and other ailments.

On the other side of the world, staff nurse **CHANDA PLONG, RN**, traveled aboard the US Navy hospital ship *Mercy* to provide aide to the medically underserved people of Bangladesh, East Timor and Indonesia. Also, during the second phase of her fellowship, Plong served as a nursing coordinator in the pulmonary ward of the Khmer Soviet Friendship Hospital in Phnom Penh, Cambodia. Plong was herself born in a Cambodian refugee camp before her family fled to the US in the early 1980s.



80TH ANNIVERSARY

In 2006, MGH's Mallinckrodt General Clinical Research Center (GCRC) marked its 80th year of advances in medicine and care delivery. Nurses play an essential role in the GCRC by conducting their own research, promoting patient safety and ensuring the rights of research participants by educating them about their medical needs.



The PCS Diversity Program unveiled a new logo in 2006, to increase visibility and recognition of diversity-focused initiatives. The logo earned first-place honors in the Graphic Identity category at the Publicity Club of New England's annual Bell Ringer Awards.



GOOD SPORTS

A sports injury can be devastating to professional and amateur athletes alike, typically requiring a multidisciplinary and coordinated approach to care. Throughout 2006, MGH Physical Therapy (PT) worked closely with the Department of Orthopaedics Sports Medicine Unit, and in October the hospital officially opened the MGH Sports Medicine Center. The goal of the center is to provide expert medical evaluation, treatment and rehabilitation of sports-related and musculoskeletal injuries for professional,

amateur and recreational athletes who have shoulder, knee, ankle and elbow disorders. The center brings together an expert team of orthopaedic surgeons, nurse practitioners, nurses, physical therapists, primary care physicians, sports medicine fellows, radiologists, radiology technologists and support staff in a state-of-the-art facility dedicated to the specific needs of patients with sports injuries.

The PT staff was also involved in supporting several local sports events throughout the year, providing practice and game-time physical therapy and athletic training services to the World Team Tennis Boston Lobsters; offering Golf Fitness clinics during the Bank of America Champions Golf Tour tournament at Nashawtuc Country Club in Concord, Mass.; and coordinating medical coverage for the Deutsche Bank Golf Championship at the Tournament Players Club (TPC) in Norton, Mass.

MGH NURSE RECEIVES RWJF RESEARCH GRANT

The Robert Wood Johnson Foundation (RWJF) awarded a \$300,000 grant to an MGH research team led by Barbara Roberge, APRN-BC, PhD, nurse practitioner in the MGH Senior Health Practice, as part of its Interdisciplinary Nursing Quality Research Initiative (INQRI) program. The goal of the grant is to explore the association between nursing and high-quality patient care for older adults, and produce and validate quality measures that reflect nurses' contributions to inpatient care; investigate the link between nursing and care quality in acute care settings; and evaluate the impact of innovative nurse-led initiatives on patient outcomes. The research is expected to demonstrate how nurses affect patient care and how clinical leaders and policy makers can support changes to improve the quality of care that nurses are able to provide.



2006 MILESTONES



“LAS CHICAS DE HARVARD”

In November 2006, two members of the MGH Department of Social Services headed to Peru on a ten-day mission in partnership with the Harvard Program on Refugee Trauma (HPRT). The goal was to offer technical assistance to HPRT-trained Peruvian healthcare providers to improve their healthcare response to patients who had survived political and gender-based violence.

Dubbed “Las chicas de Harvard” by the locals, Niza Troncoso, a domestic violence advocate, and Bonnie Zimmer, MSW, LICSW, director of the Hospitals Helping Abuse and Violence End Now (HAVEN) program at MGH, visited Lima, Ayacucho and Cuzco, Peru. Site visits included various health centers, the Maternal/Child Health Hospital Lima, Hermilio Valdizan Mental Health Hospital Lima, University of San Marcos Medical School, Ministry of Health and Ministry of Women’s Health.

The HAVEN team left Peru with hopes of creating a sister program with their new friends to share resources, knowledge and skills across borders.



Assistant director of Respiratory Care Dean Hess, PhD, RRT, FAARC, received a high honor from the American Association of Respiratory Care. He was presented with the 2006 Jimmy A. Young Medal. The award is presented to a member of the respiratory care profession who exceeds all expectations for meritorious service and who has made a significant contribution to the advancement of the profession.

INTRODUCING CBEDS

Monitoring the status of MGH's 902 inpatient beds can be a daunting task. At the end of 2006, the Coordinated Bed Efficiency Dashboard System (CBeds) was introduced throughout MGH's patient care units as part of an initiative of the Strategic Planning Capacity Management Team, co-led by Jeanette Ives Erickson, RN, MS, senior vice president for Patient Care Services and chief nurse, and Richard Bringhurst, MD, senior vice president for the Department of Medicine. The goal was to improve communication between specific departments, reduce phone calls and increase patient throughput.

Following a hospitalwide rollout, CBeds is now used by the Admitting Department as a search engine for patient placements; by staff on all patient care units to process admission, discharge and transfer transactions; and by unit-based housekeeping staff to access bed turnover information. CBeds provides the Emergency Department and the Post Anesthesia Care Unit staff an opportunity to monitor the availability and status of bed reservations.

The result of this initiative led by Nursing, Admitting and Information Services is a synchronized system of real-time information that helps place patients in hospital beds as quickly and efficiently as possible.

**NATIONAL NURSE OF THE YEAR**

Susan Tully, RN, MGH Surgical Intensive Care Unit (SICU) nursing director, was named *Nursing*

Spectrum's 2006 Nurse of the Year in the category of Management. Tully was nominated by the SICU staff in recognition of her excellence in leadership, innovation, mentorship, communication and strength of character. Three other MGH nurses also received New England Nursing Spectrum Excellence Awards in 2006, including Diane Carroll, RN, PhD, for teaching; Adele Keeley, RN, for advancing and leading the profession; and Jean Stewart, RN, for clinical care.

SPEECH, LANGUAGE & SWALLOWING DISORDERS AND READING DISABILITIES SPECIALTY AREA

Through recent advances, patients with head and neck cancers are experiencing a higher-than-ever cure rate. While this is great news, these patients often suffer from speech or swallowing problems that impact their ability to communicate or even to eat and drink. At MGH, speech-language pathologists have become an integral part of a multidisciplinary team to provide highly specialized care for this unique patient population. The impact of their efforts is clearly being felt, as this work has increased by nearly 30 percent in the past year alone.

AWARD-WINNING MOVIE

In the spring of 2006, MGH social worker Barbara Moscovitz, MSW, LICSW, coordinator of Geriatric Social Work, MGH Geriatric Medicine Unit, added a new role to her vitae: award-winning film producer. Moscovitz served as a featured expert and the executive producer for the 28-minute film "Family Matters: Coming Together for Alzheimer's." The movie is designed to help newly diagnosed and early-stage Alzheimer's disease patients and families through a frightening and disorienting period in their lives.

In April 2006, the film received a Gold Remi at the 39th annual WorldFest-Houston International Film Festival, and in November it earned a "FREDDIE" award from the International Health & Medical Media Awards.



2006 MILESTONES

Caring for the family and friends of a patient becomes an important part of caring for the patient. To make it easier for friends and family to stay in touch and up to date about a loved one's condition, MGH provides an innovative Web-based service called MGH CarePages. Throughout 2006, the hospital heard from many of the patients and families using the service. The following letter tells their story best:



“We want to thank you very deeply for the opportunity to create a CarePage. Over the three-week period of [our friend's] hospitalization, [we were] able to use this service to keep her extended network of friends and family informed about her condition. Her page has 226 members; and there have been 4,322 visits. We have heard repeatedly from members how helpful they found it to be kept up to date...and members of [the patient's] extended community found it very meaningful to be able to send their wishes.

MGH CarePages was a gift to all of us.”



AWARD FOR LEADERSHIP
Theresa Gallivan, RN, MS, associate chief nurse, and Hasan Bazari, MD, Department of Medicine, accepted the prestigious 2006 Nathaniel Bowditch

Prize. The nurse-physician team were recognized for their leadership of the Clinical Process Analysis Project, which helped to optimize bed utilization while enhancing quality and efficiency of care for patients in our medical service.

PATIENT ADVOCACY

MGH is dedicated to being patient centered, and the Office of Patient Advocacy (OPA) provides an important mechanism for patients, family and visitors to forward commendations and concerns about their experiences at MGH. This direct feedback about the patient experience helps to improve the care and services offered throughout the hospital. In order to make the process of forwarding information even easier, in 2006 OPA added a link to its Web site that allows users to send confidential e-mail to an advocate.

INAUGURAL OT FELLOWSHIP

In 2006, Taber Hilton, OTR/L, successfully completed the first academic and clinical hand fellowship program sponsored by MGH Occupational Therapy (OT). The fellowship offers three semesters of lecture and clinical application in a class collaboratively taught by Tufts University professors and the MGH occupational hand therapists. The first and only program of its kind to offer a full year of clinical mentoring, this innovative fellowship both supports the educational mission of the hospital and helps in recruiting qualified hand therapists, who are limited in number due to the years of required training and mentorship. The program has also helped current staff members develop their lecturing and teaching skills.

MGH PALLIATIVE CARE NURSE HONORED

In recognition of its 20th anniversary, the Hospice and Palliative Nurses Association (HPNA) presented its 2006 “Leading the Way” award to past presidents, including MGH’s Connie Dahlin, APRN, palliative care nurse practitioner and 2004 HPNA president. This year’s award was designed to recognize the efforts of leaders in nurturing and building the organization and their continued contributions in advancing the cause of hospice and palliative care. During Dahlin’s tenure, membership grew to more than 7,000, three new chapters were added and a Diversity Task Force was established.



GIVING BACK

At the MGH Retail Shops, shoppers can buy a gift that truly keeps on giving. Run by the Ladies Visiting Committee (LVC), the stores annually generate more than \$300,000 in profits that the LVC donates back to the MGH community.

Recently, the LVC funded a pilot in the Pediatric Intensive Care Unit (PICU) to test an electronic patient census board. The new equipment displays a variety of patient information, including pending exams and blood work, names of providers, and the location of a patient—whether in surgery, his or her room, or a testing area—and this information can be accessed by caregivers both on-site and from remote locations via computer.

The LVC also funds various programs that enhance the environment of care, including the maintenance and upkeep of the Cancer Center’s Howard Ulfelder, MD, Healing Garden on the roof of MGH’s Yawkey Center for Outpatient Care and the purchase of a tropical fish tank to brighten up the Pediatric ICU family lounge.



Eileen Flaherty, RN, MBA, MPH, was named director of Patient Care Services Financial Management Systems. She began her career at MGH in 1997 and most recently served as nursing director in general medicine. She was the first graduate of the dual MBA/MPH degree program at Boston University.

This year Michael McElhinny, MDiv, was named director of the MGH Chaplaincy. McElhinny has been a respected oncology chaplain at the hospital since 1998 and is an authority on spirituality and patient care.



2006 YEAR IN REVIEW

FACTS & FIGURES

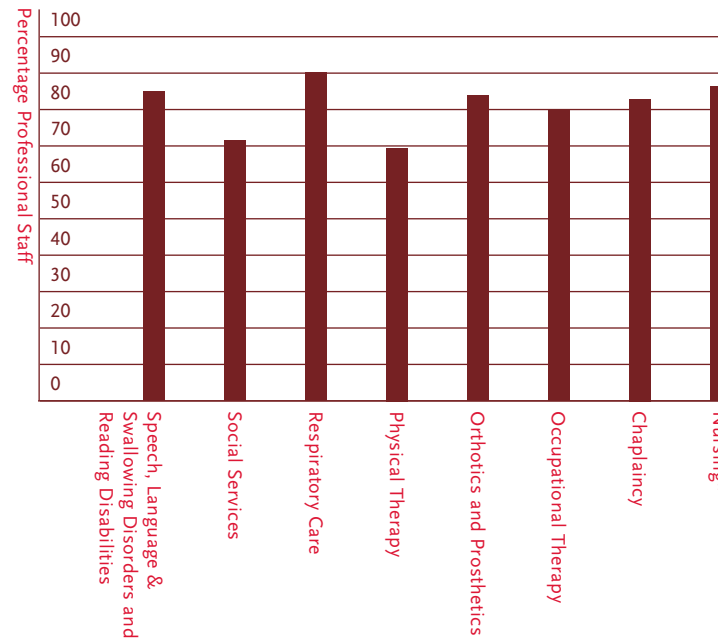
Inpatient Beds	902
Admissions	46,276
Surgical Procedures	35,098
Length of Stay (days)	6
Observation Admissions	5,488
Occupancy	85.8%
Outpatient Visits	1,061,456
MGPO Visits	777,437
Clinic Visits	413,702
Health Center Visits	289,994
Emergency Department Visits	79,176

STAFF IN PCS

	Total	New Hires
Nursing	4,389	784
Chaplaincy	25	5
Occupational Therapy	37	14
Orthotics/Prosthetics	0	
Physical Therapy	171	48
Respiratory Care	96	18
Social Services	124	20
Speech, Language & Swallowing Disorders and Reading Disabilities	63	18
Combined Total	4,913	907

The year 2006 was another successful one in recruitment for Patient Care Services, with more than 900 new employee hires. Together, the Patient Care Services clinicians provided care to approximately 46,000 admissions to MGH and supported more than one million outpatient visits.

PERCENTAGE OF PROFESSIONAL STAFF BY DEPARTMENT

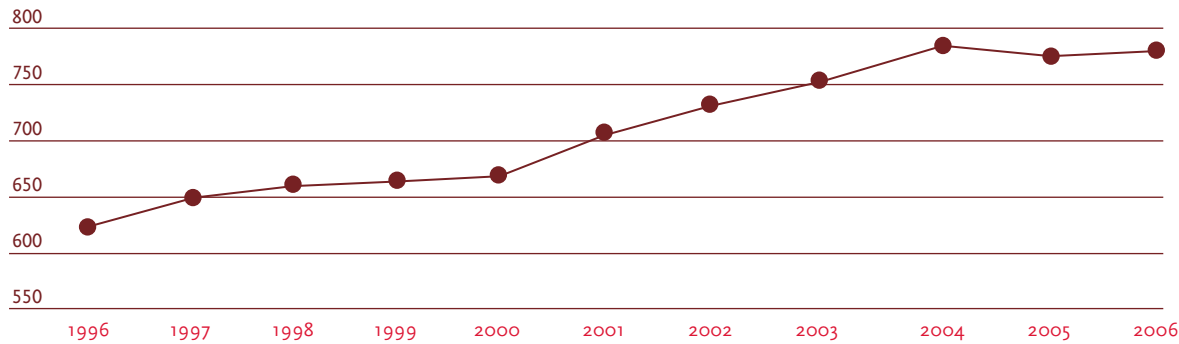


*Direct care

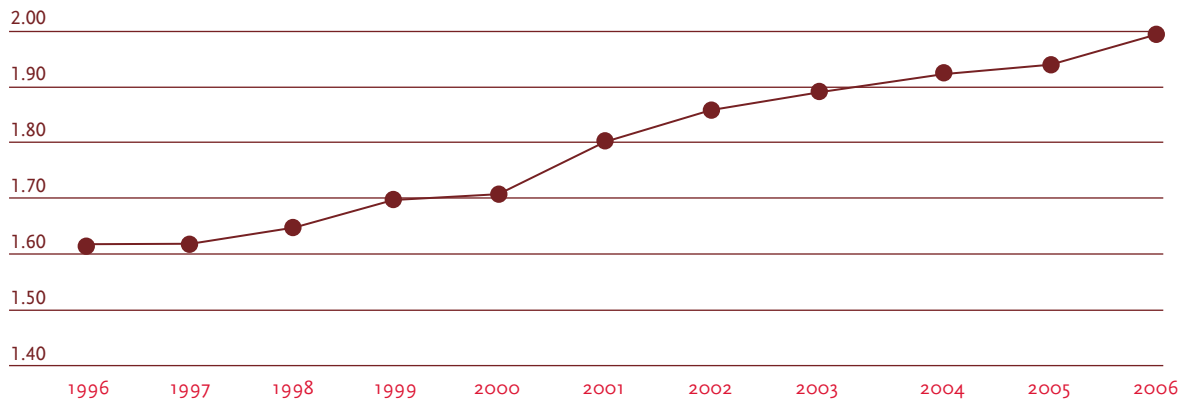
Census and Acuity

As patient census and acuity continued to climb in 2006, members of Patient Care Services responded with creative ways to support staff in meeting the increasing volume of complex patient care needs. For example, in 2006 alone The Knight Simulation Center provided 57 hands-on training sessions enrolling more than 450 staff members across the disciplines. As well, The Center for Innovations in Care Delivery was launched to provide a mechanism for interdisciplinary groups of clinicians to explore opportunities to transform care at the bedside. In addition, the opening of the Emergency Department Observation Unit provided added relief to our capacity management challenges.

CENSUS *Midnight Census*



PATIENT ACUITY TREND* *Average Patient Acuity*



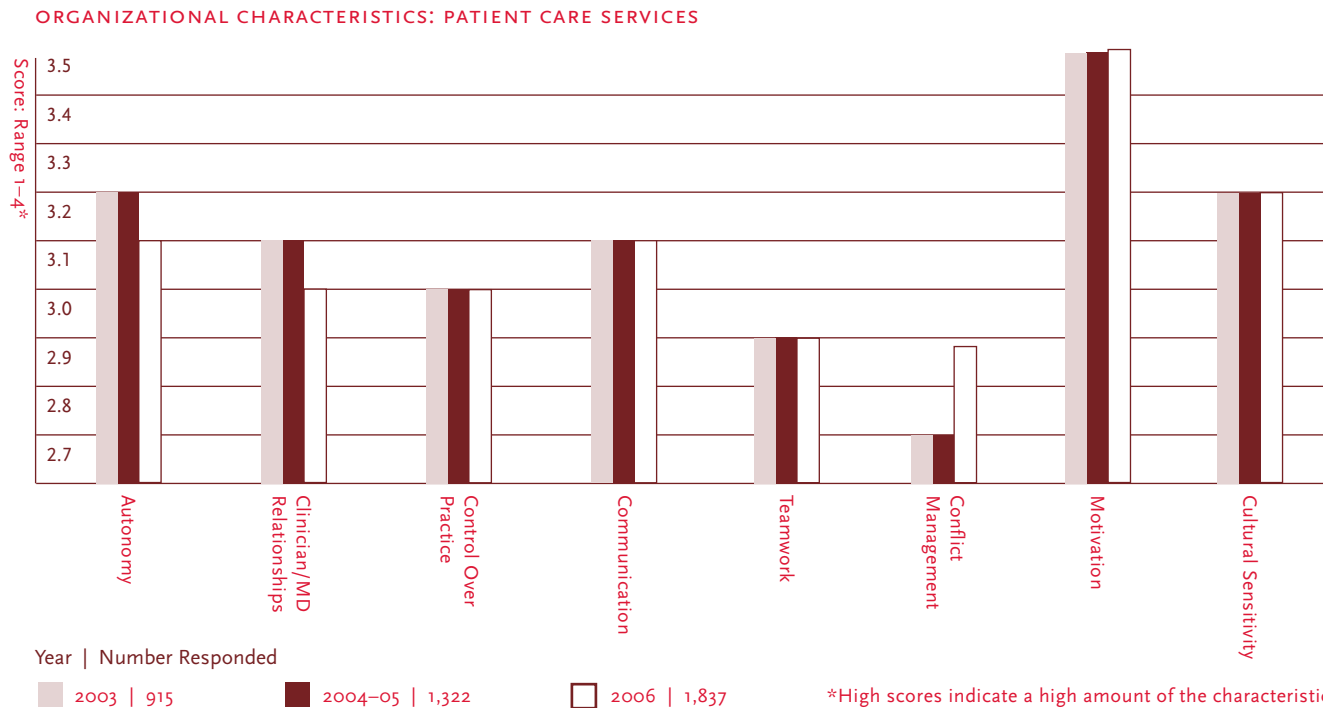
*Excludes obstetrical units

2006 YEAR IN REVIEW

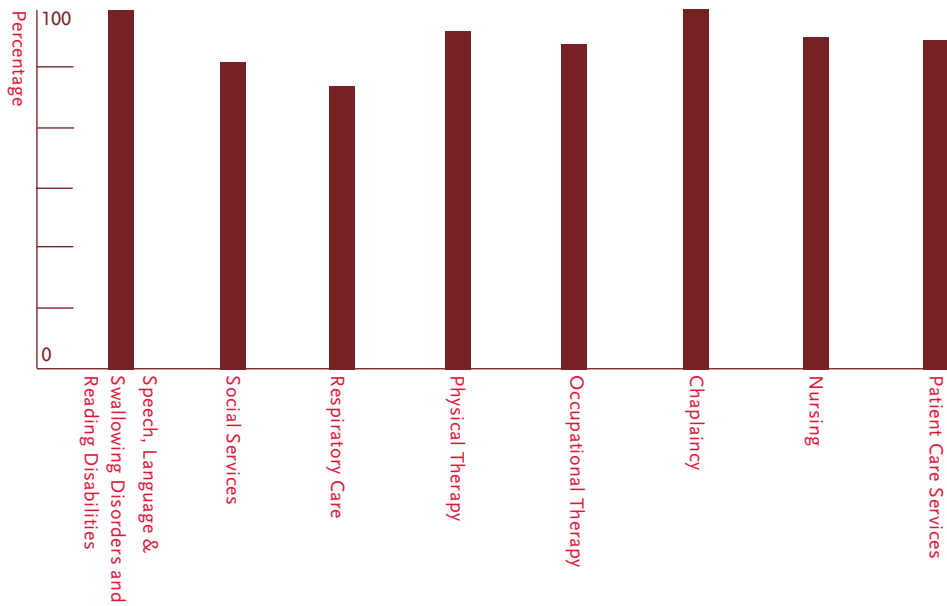
Staff Satisfaction

Each year, clinicians within Patient Care Services are surveyed to assess satisfaction with the professional work environment. In 2006, the overall response rate for the survey was 61% (up from 46% in 2005), with more than 1,800 respondents.

Patient Care Services clinicians continue to report high satisfaction with the practice environment at MGH; 92% of the 2006 survey respondents reported they were satisfied or very satisfied with their practice environment. Further, the clinicians reported high agreement with the organizational characteristics of Autonomy, Control Over Practice, Clinician-Physician Relationships, Communication, Teamwork/Leadership, Conflict Management, Internal Work Motivation and Cultural Sensitivity.

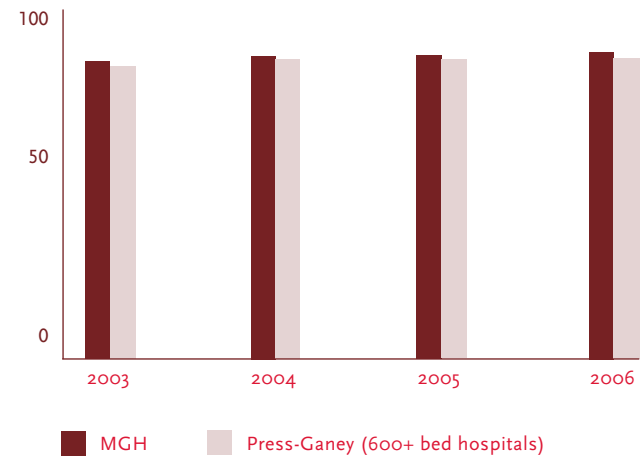


SATISFACTION WITH THE PROFESSIONAL PRACTICE ENVIRONMENT



OVERALL PATIENT SATISFACTION

Mean of Responses



Patient Satisfaction

Meeting and exceeding the expectations of our patients and their families continues to be a top priority for all Patient Care Services employees. In 2006, our overall patient satisfaction scores exceeded the Press-Ganey benchmark of hospitals with 600+ beds.

PROFESSIONAL ACHIEVEMENTS

2006

PROFESSIONAL ACHIEVEMENTS • *awards*

STATE AND REGIONAL

Diane Carroll, RN, PhD

The Yvonne L. Munn Center
for Nursing Research
*2006 MARN Excellence in Nursing
Research Award*
Massachusetts Association of Registered
Nurses (MARN)

Diane Carroll, RN, PhD

The Yvonne L. Munn Center
for Nursing Research *Spirit Award*
*Alpha Chi Chapter, Boston College, Sigma
Theta Tau International Nursing Honor Society*

Diane Carroll, RN, PhD

The Yvonne L. Munn Center
for Nursing Research
*Finalist, New England Nursing Spectrum
Nursing Excellence Award in Teaching*

Marlene Freeley, RN

Occupational Health Services
*Theresa LaPlante Award for Administrative
Excellence by a Nurse*
*Theta-at-Large Chapter, Sigma Theta Tau
International Nursing Honor Society,
Boston University*

Jane Harker, MS, BSN, RN, CGRN

GI Endoscopy

Sandra Hession, RN, BSN, CGRN

GI Endoscopy

Christopher Robbins, RN, CGRN

GI Endoscopy
Outstanding Region of the Year
*The New England Society of Gastroenterology
Nurses and Associates (NESGNA)*

Karen Holland, RN, Emergency Department

Champions in Health Care Award
Boston Business Journal

Adele Keeley, RN, MA, Medical

Intensive Care Unit
*The New England Nursing Spectrum Nursing
Excellence Award for Leading and Advancing
the Profession*

Amy Levine, RN, BSN, Operating Room

President's Award
*Annual AORN Mass. Chapter 1 Awards
and Recognition Banquet*

Carol Marcotte, RN, MS, Psychiatry

Unsung Heroine of 2006 Award
*Commonwealth of Massachusetts Commission
on the Status of Women*

Catherine O'Malley, RN, MSN, CNOR

Operating Room
*Award for Excellence in PeriOperative Nursing
Annual AORN Mass. Chapter 1 Awards and
Recognition Banquet*

Rev. Msgr. Felix Ojimba, Chaplaincy

Recognition for Excellence in Pastoral Care Award
Health Care Ministry, Archdiocese of Boston

Patient Care Services

*Bell Ringer Award for Regional
Print Feature Placement*
The Publicity Club of New England

Patient Care Services

*Bell Ringer Award for Service Publicity –
Consumer Campaign*
The Publicity Club of New England

Angelleen Peters-Lewis, RN, PhD

*Dorothy A. Jones Award, Scholarship,
Service, Development*
Boston College, Boston, MA

Jean Stewart, BSN, RN, Orthopaedics

*The New England Nursing Spectrum Nursing
Excellence Award for Clinical Practice*

Mary Sullivan, RN, MS, APRN, BC

*2006 Dean's Award, Boston College
Doctoral Program*

Susan Tully, RN, Surgical Intensive Care Unit

*The New England Nursing Spectrum Nursing
Excellence Award for Management*

Philip Waithe Jr., RN, The Norman Knight Nursing Center for Clinical & Professional Development,

*Excellence in Nursing Award New England Re-
gional Black Nurses Association, Inc. (NERBNA)*

Joy Williams, RN

Black Achievers Award, Boston YMCA

PATIENT CARE SERVICES

Carol Corcoran, RN, Neuroscience Unit

*The Norman Knight Preceptor
of Distinction Award*

Anita Carew, RN

Newborn Intensive Care Unit
Orren Carrere Fox Award

Christine D'Antonio, RN

Newborn Intensive Care Unit
*Twentieth Annual Ben Corrao Clanon
Memorial Scholarship*

Maria Lavadinho, RN, Medicine Unit

**Maria Avola, Critical Care Patient
Care Associate**
Brian M. McEachern Extraordinary Care Award

Nicole Spano-Niedereirer, RN

Cardiac Catheterization Lab

Kelly Trecartin, RN

Cardiac Catheterization Lab
Yvonne L. Munn, RN, Nursing Research Award

MGH**Gloria Ciccone, MD****Jennifer Garrity, RN, BSN****Ann Haywood-Baxter, MDiv, BCC****Aomar Nait-Talb****Lindsay Pemberton, RN, BSN****Carl Seashore, MD****Patricia Scott, RN, BSN***Family Centered Care Awards, MassGeneral Hospital for Children***Lynn Cetrulo, Volunteer***Janet Ballantine Oncology Volunteer Award***Cynthia Johnson, RN***Nurse Appreciation Award
Senior Medical Residents, Internal Medicine***Celeste Peters, MGH Ambassador****Carly Jean Francois, RN, Pediatrics****Immacula Benjamin, RN, Pediatrics**
*African American Pinning Ceremony***Janet Umphlett, RN, OCN***Radiation Oncology
Oncology Career Development Award***Jason Visco, RN, Emergency Department***Nursing Teaching Award
Pediatric Residents***Tracey Zachary, RN, Emergency Department***Nursing Appreciation Award
Graduating class of Emergency Room Residents***NATIONAL****Paul Arnstein, RN, PhD, Pain Relief***Pain and Society Fellowship Award
Mayday Foundation***Constance Dahlin, RN, APRN, BC***Palliative Care Service
HPNA Leading the Way Award
Hospice and Palliative Nurses Association (HPNA)***Brian French, RN, C, MS, The Norman***Knight Nursing Center for Clinical & Professional Development
2006 Excellence in the Role of Professional Development Facilitator, Change Agent and Consultant Award
National Nursing Staff Development Organization (NNSDO)***Dean Hess, PhD, RRT, FCCP, FAARC***Respiratory Care Services
Jimmy A. Young Medal
American Association for Respiratory Care***Jeanette Ives Erickson, RN, MS***Honored by First Lady Laura Bush at the Project Hope Gala for Basrah Children's Hospital, Washington, DC***Catherine Mannix, RN, MSN, OCN***Radiation Oncology
Phi Kappa Phi Honor Society Award***Kristin Parlman, PT, DPT, NCS***Physical and Occupational Therapy Services
Clinical Excellence in Neurologic Physical Therapy Award
American Board of Physical Therapy Specialties, Combined Sections Meeting***Patient Care Services***2006 Media Award
American Academy of Nursing***Patient Care Services***First Place, Media Relations Campaign
Nonprofit PR Awards***Michelle Pollard, MS, CCC-SLP***Speech, Language & Swallowing Disorders and Reading Disabilities
(2) Continuing Education Awards
American Speech-Language-Hearing Association***Jacqueline Somerville, RN, MS, CMAC***Nursing Administration and Support Services
The American Organization of Nurse Executives Scholarship for Nurse Executives
The American Organization of Nurse Executives***Susan Tully, RN, Surgical Intensive Care Unit***Nurse of the Year – Excellence in Nursing Management
Nursing Spectrum Nurse of the Year Award, Chicago, IL***INTERNATIONAL****Kathleen Habeeb, RN, BSN***General Clinical Research Center
Membership Induction to Eta Tau Chapter, Sigma Theta Tau International***Barbara Moscovitz, MSW, LICSW***Geriatric Medicine Unit
Executive Producer, "Family Matters: Coming Together for Alzheimer's"
Gold Remi Award – 39th Annual WorldFest Houston International Film Festival*

PROFESSIONAL ACHIEVEMENTS • *presentations*

STATE AND REGIONAL

Joanna Akladiss, MS, OTR/L, CHT

Intro to UE Evaluation and Intervention
Splinting Applications and Principles
Intro to Physical Agent Modalities
University of New Hampshire, Concord, NH

Joanna Akladiss, MS, OTR/L, CHT

Splinting
Tufts University, Medford, MA

Paul Arnstein, RN, PhD

State Pain Initiative Approach to Promoting
Optimal Pain Control
*New Hampshire Hospice and Palliative Care
Organization's Annual Pain and Beyond
Conference, Manchester, NH*

Anne-Marie Barron, RN, PhD, CS

Caring and Meaning: The Transformative
Power of Compassion
*Annual Thomas Kloss Memorial Lecture,
Dana Farber Cancer Institute, Boston, MA*

Anne-Marie Barron, RN, PhD, CS

Best Practices and Proposed Remedies—
Panel Presentation
*The Quality of Work Life and Quality of Patient
Care Conference, Simmons College, Boston, MA*

Anne-Marie Barron, RN, PhD, CS

Caring and Meaning in Late Life
College Alumnae, Simmons College, Boston, MA

Gae Burchill, MHA, OTR/L, CHT

Suzanne Curley, MS, OTR/L, CHT
Upper Extremity Rehabilitation II – Anatomy:
the Flexor and Extensor Tendons
Tufts University, Medford, MA

Gae Burchill, MHA, OTR/L, CHT

Upper Extremity Rehabilitation II –
Management of Flexor Tendon Injuries
Tufts University, Medford, MA

Gae Burchill, MHA, OTR/L, CHT

Suzanne Curley, MS, OTR/L, CHT
Topics in Upper Extremity Rehabilitation II
Tufts University, Medford, MA

Virginia Capasso, RN, APRN, PhD, BC

Advancing Wound Care: The
Volcano is Rumbling
*Northeast Regional Nurse Practitioner
Conference, Manchester, NH*

Virginia Capasso, RN, PhD, APRN, BC

Update on Wound Dressings—Gels, Foams,
Films, and Fabrics
New England Society for Vascular Surgery

Virginia Capasso, RN, PhD, APRN, BC

Challenges of a Biometric Pilot
*Institute for Nursing Health Care Leadership,
Research Collaborative Colloquium*

Diane Carroll, RN, PhD

Long-Term Effects of the Implanted
Cardioverter Defibrillator on Quality of Life
*Eastern Nursing Research Society Meeting,
Cherry Hill, NJ*

Daniel Chipman, RRT

Graphic Analysis of Mechanical Ventilation
*First Annual Cardiopulmonary Conference,
Norwood Hospital, Norwood, MA*

Regina Doherty, OTD, OTR/L

Ethics Education in the Occupational Ther-
apy Curricula: Advancing Moral Reasoning
Through Effective Pedagogical Content
*Doctorial Leadership Colloquium, Boston School
of Occupational Therapy, Tufts University,
Boston, MA*

Regina Doherty, OTR/L, OTD

Steering Through the Maze of Ethical Conflicts
*New England Occupational Therapy Educa-
tional Council Annual Conference for Fieldwork
Educators, Charlestown, MA*

Jean Fahey, MSN, RN, CCRN, CNRN, APRN, BC, CNS

Issues Related to Acute Care of the
Neuroscience Patient
Simmons College, Boston, MA

Jean Fahey, MSN, RN, CCRN, CNRN, APRN, BC, CNS

Anatomy, Assessment, & Pathophysiology of
the Nervous System
*Annual Neuroscience in a Nutshell Lecture,
Simmons College, Boston, MA*

Jean Fahey, MSN, RN, CCRN, CNRN, APRN, BC, CNS

Traumatic Brain Injury, Acute Stroke, Seizures,
Brain Tumors
*Annual Critical Care Course, Hallmark Health
Systems, Medford, MA*

Jean Fahey, MSN, RN, CCRN, CNRN, APRN, BC, CNS

Cerebral Aneurysm Treatment Options,
Phenylephrine and Screening for Blood Pres-
sure Dependent Neurological Deficit, Cardiac
Changes and Subarachnoid Hemorrhage,
Acute Stroke Management
*Faculty Update, Hallmark Health Systems,
Medford, MA*

Karen Fitzgerald, RN, MSN, CCRN

Heart Failure and the Surgical Patient: Impli-
cations for PeriAnesthesia Nursing
*Massachusetts Society of PeriAnesthesia Nurses
Spring Conference, Worcester, MA*

Carol Harmon-Mahony, MS, OTR/L, CHT

Fracture Management
Tufts University, Medford, MA

Carol Harmon-Mahony, MS, OTR/L, CHT

Wrist Injuries
Tufts University, Medford, MA

Dean Hess, PhD, RRT, FCCP, FAARC
Weaning from Mechanical Ventilation
3rd Annual Berkshire Trauma Symposium, Hancock, MA

Dean Hess, PhD, RRT, FCCP, FAARC
New Respiratory Therapy Concepts and Technologies
31st Annual Congress of the Oncologist Nurses Society, Boston, MA

Karen Hopcia, RN, ScD(c), APRN, BC, COHN-S
Leadership in Nursing
Theta-at-Large Induction Ceremony for Sigma Theta Tau International Nursing Honor Society, Boston University, Boston, MA

Karen Hopcia, RN, ScD(c), APRN, BC, COHN-S
Physical Therapy and Disability Duration in Occupational Knee Injuries
Research Grand Rounds, Occupational Health, Harvard School of Public Health, Boston, MA

Jeanette Ives Erickson, RN, MS
Nursing Now and in the Future
Introduction to Business and Management in Health Care
Harvard Medical School, Boston, MA

Jeanette Ives Erickson, RN, MS
Innovations and Challenges in Nursing Education: The Emerging Program of CNL and DNP
INHL Conference, Cambridge, MA

Jeanette Ives Erickson, RN, MS
Nexus of Nursing Knowledge and Practice Accomplished by PHD Nurses in an Acute-Care Setting
Boston College School of Nursing, PhD Colloquia, Boston, MA

Adele Keeley, RN, MA
Susan Morash, RN, BSN, MA
Conflict Resolution Skills in the Health Care Setting
University of Massachusetts, Boston, Conference on Dispute Resolution, Boston, MA

Mary Larkin, RN, BSN
Ideal Practice Environments and Nursing Practice Models: The State of the State
Massachusetts Organization of Nurse Executives (MONE) Management of Practice Committee, Burlington, MA

Mary Lavieri, RN
Pulmonary Critical Care
Critical Care Registered Nurses (CCRN) Review, Manchester, NH

Suy-Sinh Law, PT, OCS, M-AC
Maintaining Healthy Bones
George Schlichte Learning Center, Boston, MA

Suy-Sinh Law, PT, OCS, M-AC
Maintaining Healthy Bones
Gee How Oak Tin Association, Boston, MA

Barbara Levin, RN, BSN, ONC, LNCC
Unleashing Your Leadership
Massachusetts Nurses Association, Canton, MA

Barbara Levin, RN, BSN, ONC, LNCC
Nurse Protect Thyself – Communication Pitfalls in the Healthcare Industry
Massachusetts Nurses Association, Canton, MA

Barbara Levin, RN, BSN, ONC, LNCC
Improving Patient Safety – Celebrating Successes
Massachusetts Nurses Association, Canton, MA

Barbara Levin, RN, BSN, ONC, LNCC
The Fascinating World of Forensic Sciences
Hingham High School, Hingham, MA

Colleen Lowe, MPH, OTR/L, CHT
Sensation and Sensibility
Tufts University, Fellowship Program, Medford, MA

Kelly Macauley, PT, DPT, GCS
APTA: Working for You
North Shore Community College, Danvers, MA

Janet Madigan, RN, MS, CNAA
Present and Future Trends of Nursing in Massachusetts
Nurses Day, Brockton Hospital, Brockton, MA

Janet Madigan, RN, MS, CNAA
The Nurse of Tomorrow: Shaping the Future of Nursing
The Patients First Experience: A National Model – Transparency, Staffing and Safety, Boston, MA

Carol Mark Dinnes, MA, CCC-SLP
The Relationship Between Spoken and Written Language
Orton-Gillingham Training Student Reading Disabilities, Boston, MA

Mary McKenna Guanci, RN, MS, CNRN
Brain Freeze: Temperature Management in the Intensive Care
Wisdom from the Field: Innovations in Clinical Practice Symposium, Methodist Hospital, Houston, TX

Mary McKenna Guanci, RN, MS, CNRN
A Neuroscience Review
ICU Review Course, Concord Hospital, Concord, NH

Mary McKenna Guanci, RN, MS, CNRN
Stroke Update: Clinical Implications
Cape Cod Hospital System, ICU Conference, Hyannis, MA

Mary McKenna Guanci, RN, MS, CNRN
Acute Stroke Review
American Association of Critical Care, Manchester, NH

Sally Millar, RN, MBA
Guest Panelist, Physician Misconduct
Harvard Medical School, Boston, MA

Theresa Michel, PT, DPT, MS, DSc, CCS
Look: AHEAD Study – to Diabetic Subjects
NIH Funded Grant, Boston, MA

Danuza Nunn, MS, CCC-SLP
Swallowing from Clinical Evaluation to Instrumental Assessment and Management
Holyoke Hospital, Holyoke, MA

Danuza Nunn, MS, CCC-SLP
Swallowing Issues related to Parkinson's Disease
Association Support Group, Newton Wellesley Hospital, Newton, MA

Danuza Nunn, MS, CCC-SLP
Dysphagia Therapy; and, Exercise Physiology Applied to Swallowing
First Annual Vitalstim Provider Conference, Newton Wellesley Hospital, Newton, MA

Kathryn Pazola, RN, MSN, CPON
Clinical Narrative to Nursing Students
Massachusetts College of Pharmacy, Worcester, MA

PROFESSIONAL ACHIEVEMENTS • *presentations*

Kathryn Pazola, RN, MSN, CPON

Exemplar to a Nursing Class
Massachusetts College of Pharmacy, Boston, MA

Gayle Peterson, RN

Collaborative Governance at MGH
Massachusetts Magnet Networking Group, Boston, MA

Monica Pessina, OTR/L, PhD

Primate and Human Research Related to Upper Extremity Function
Tufts University, School of Occupational Therapy, Medford, MA

Katherine Phillips, PT, MS, CHT, CLT

Splinting Principles Lecture and Lab
Tufts University, School of Occupational Therapy, Medford, MA

Katherine Phillips, PT, MS, CHT, CLT

Evaluation of the Upper Extremity
Tufts University, School of Occupational Therapy, Medford, MA

Marion Phipps, RN, MS, CRRN, FAAN

Translational Research: Do We Do What We Know?
PhD Colloquia, Boston College School of Nursing, Boston, MA

Diane Plante, PT, MS

Temporomandibular Joint Disorders – Evaluation and Treatment
Harvard Dental School, Cambridge, MA

Marita Prater, RN, MS

Stick to the Knitting – Focusing on Nursing
Massachusetts Organization of Nurse Executives (MONE) Leadership Development Workshop, Waltham, MA

Ellen Robinson, RN

Gayle Peterson, RN
Ethical Considerations in Pain Management
Massachusetts Chapter of American Nurses Pain Society, Melrose, MA

Alice Maron Rotfort, MSW, LICSW

Disabled Adults Enjoying Life in Your Community... Disabled Adults Sharing Your Home
Innovation in Social Work conference, Boston College, Chestnut Hill, MA

Katherine Russo, OTR/L

Splinting Principles Lab and Lecture
Tufts University, Medford, MA

Katherine Russo, OTR/L

Evaluation of the Upper Extremity
Tufts University, Medford, MA

Susan Sannella-Fleming, PT

Position, Body Mechanics/Lifting, and Exercise Pre- and Post-Partum
Teen Mothers at Choice Through Education, Chelsea, MA

Amea Seitz, PT, DPT, MS, OCS

Shoulder Anatomy and Biomechanics
Tufts University, School of Occupational Therapy, Medford, MA

Amea Seitz, PT, DPT, MS, OCS

Shoulder Examination, Diagnosis and Treatment
Tufts University, School of Occupational Therapy, Medford, MA

Colleen Snyderman, RN, MSN

Intercepting Near Miss Adverse Events: the Critical Care Nursing Safety Net
Institute for Nursing Healthcare Leadership, Brigham and Women's Hospital, Boston, MA

Linda Steiner, PT, DPT, MS, OCS

Managing Incontinence in the Home Care Setting
South Shore Homecare Rehab, Randolph, MA

Sasha Yampolsky, ScD, CCC-SLP

Reconceptualizing Reading Fluency
Reading First Conference, Sturbridge, MA

Sasha Yampolsky, ScD, CCC-SLP

Reading Fluency
Linguistics in Education Meeting, Tufts University, Medford, MA

NATIONAL

Lillian Ananian, RN, MSN

Marjorie Voltero, RN, CGRN
Introduction of the Nurse Triage Role for Inpatient Endoscopy Patients
33rd Annual Society of Gastroenterology Nurses and Associates (SGNA) Course, San Antonio, TX

Lillian Ananian, RN, MSN

Development of a Nurse Triage Program in Endoscopy
Society of Gastrointestinal Nurses and Associates, San Antonio, TX

Paul Arnstein, RN, PhD

The Nurse's Role as Catalyst for Patient Comfort and Satisfaction
Northeast Regional Chapter Meeting, American Society of Perioperative Nurses, Rochester, NY

Katie Binda, MSW, LICSW

Kathy Clair-Hayes, MSW, MA, LICSW
Barbara Cashavelly, RN, MSN, AOCN
Elizabeth Alterman, BS
Meeting the Needs of Support Staff in a Patient-Family Centered Oncology Center
22nd Annual AOSW Conference, Oncology Social Workers Steering the Path: Quality of Life in the Cancer Experience, Minneapolis, MN

Linda Bonnell, LICSW

Stacey Chandler, LICSW
Living with Cancer: An Overview of Social Work with Gastrointestinal Oncology Patients
22nd Annual AOSW Conference, Oncology Social Workers Steering the Path: Quality of Life in the Cancer Experience, Minneapolis, MN

Janet Callahan, PT, MS, NCS

The Role of Physical Therapy in the Management of Persons with Ataxia
National Ataxia Foundation Membership Meeting, Quincy, MA

Melissa Caron, MS, CCC-SLP

Marybeth Hetherington, MS, CCC-SLP
Outcomes of Group Reading Instruction in Patients with LLD
American Speech Language Hearing Association Convention, Miami, FL

Lin-Ti Chang, RN-BC, MSN,

APRN-BC, CCRN
Care of Blunt Cardiac Trauma
20th Anniversary Ceremony of Emergency Medicine Center & International Conference on Trauma Care, 2nd Affiliated Hospital Zhejiang University, School of Medicine, Hangzhou, China

Daniel Chipman, RRT

Focus on Respiratory Care and Sleep
Medicine Conference:
Tubes and Trachs from A to Z, Nashville, TN

Kathy Clair-Hayes, MSW, MA, LICSW

Take Good Care Packs: Therapeutic Backpacks
for Families Living with Cancer
*22nd Annual AOSW Conference, Oncology
Social Workers Steering the Path: Quality of Life
in the Cancer Experience, Minneapolis, MN*

Judy Corbett, RN, BSN, MS

Video Capsule Endoscopy: Bridging the Gap
*33rd Annual Society of Gastroenterology Nurses
and Associates (SGNA) Course, San Antonio, TX*

Janet Dorrwachter, BS, RN

Andrew Frieberg, MD
Spectrum of Care for the Total Hip
Arthroplasty Patient
*National Association of Orthopedic Nurses
Annual Congress (NAON), Boston, MA*

Joanne Empoliti, RN, MSN, APRN, ONC

Ruth Bryan, RN, MSN, CAPA
Make No Bones About It, Patient Safety
is Important
*National Association of Orthopedic Nurses
Annual Congress (NAON), Boston, MA*

Deirdre Fleming, MSN, RN, FNP

Making Sense Out of Shoulder Pain
*National Association of Orthopedic Nurses
Annual Congress (NAON), Boston, MA*

Bonnell Glass, RN, MSN

Mary Sullivan, RN, MS, APRN, BC
Integrating Clinical Research Nursing
at the Massachusetts General Hospital
*General Clinical Research Centers Annual
Meeting, Washington, DC*

Tessa Goldsmith, MA, CCC/SLP, BRS-S

Audrey Cohen, MS, CCC/SLP
Paige Nalipinski, MA, CCC/SLP
Carmen Vega-Barachowitz, MS, CCC/SLP
Development and Implementation
of a Swallow Screening Tool for Acute
Neuroscience Inpatients
*American Speech Language Hearing
Association Convention, Miami, FL*

Tessa Goldsmith, MA, CCC/SLP, BRS-S

Denise McIntosh, PT, LANA
Treatment of Lymphedema in Head-Neck
Cancer: Impact on Swallowing Function
*American Speech Language Hearing Association
Convention, Miami, FL*

Tessa Goldsmith, MA, CCC/SLP, BRS-S

Allison Holman, MS, CCC/SLP
Early Cervical-Esophageal Stricture
Following Chemoradiation Therapy for
Advanced Oropharyngeal Cancer
*American Speech Language Hearing Association
Convention, Miami, FL*

Tessa Goldsmith, MA, CCC/SLP, BRS-S

Glenn Bunting, MA, CCC/SLP
Ramon Franco, MD
Mike Towhy MA, CCC/SLP
Management of Vocal Fold Paralysis:
How We Do It
*American Speech Language Hearing
Association Convention, Miami, FL*

Tessa Goldsmith, MA, CCC/SLP, BRS-S

Audrey Cohen, MS, CCC/SLP
Paige Nalipinski, MA, CCC/SLP
Carmen Vega-Barachowitz, MS, CCC/SLP
Validation of a Swallow Screening Tool
for Acute Neuroscience Inpatients
SCORE Meeting, Framingham, MA

Tessa Goldsmith, MA, CCC/SLP, BRS-S

Glenn Bunting MA, CCC/SLP
Management of Voice and Swallowing
in Patients with Head and Neck Cancer
*Two day workshops, Philadelphia, PA, Boston,
MA, New York, NY*

Tessa Goldsmith, MA, CCC/SLP

Impact of Lymphedema on Swallowing
Function in Patients with Head and Neck
*Cancer Workshops: Indianapolis, IN, New York,
NY, Baltimore, MD*

Jane Harker, MS, BSN, RN, CGRN

Christopher Robbins, RN, CGRN
The DAVE GI Nursing Project: An
Innovative Way to Share Information
*33rd Annual Society of Gastroenterology Nurses
and Associates (SGNA) Course, San Antonio, TX*

Erin Hart, MSN, RN, CPNP

Another Day in the Pedi-Orthopedic Clinic
Common Diagnosis and Management
*National Association of Orthopedic Nurses
Annual Congress (NAON), Boston, MA*

Dean Hess, PhD, RRT, FCCP, FAARC

Features and Modes of the Modern Ventilator:
What Features Do We Need?
*Symposium on Critical Care, Trauma,
and Emergency Medicine, Las Vegas, NV*

Dean Hess, PhD, RRT, FCCP, FAARC

Equipment Needs for Noninvasive Ventilation
American Thoracic Society, San Diego, CA

Dean Hess, PhD, RRT, FCCP, FAARC

Neuromuscular Respiratory Failure
*American Association for Respiratory Care,
Las Vegas, NV*

Karen Hopcia, RN, ScD(c), APRN, BC, COHN-S

Kyung Ja June, RN, PhD
Eileen McNeely, RN, PhD
Ageing Nurses: Increased Stress but Lower
Injury Rates in the Hospital Setting?
*Work, Health & Stress: Making a Difference in
the Workplace Conference, Miami, FL*

Sally Hooper, MSW, LICSW

Barbara Cashavelly, MSN, RN, AOCN
Jennifer Duran, MLS
The Development and Integration of a
Patient Education Steering Committee
in an Academic Cancer Center
*Cancer Patient Education Network, (CPEN),
Annual Conference, St. Louis, MO*

Marian Jeffries, MSN, APRN, BC, FNP-C

Comparison of CNS Responses to a National
Survey on Common Patient Problems with
Responses from Staff RNs and CNSs in a
Large Boston Medical Center
*National Association of Clinical Nurse Specialists
(NACNS) Convention, Salt Lake City, Utah*

PROFESSIONAL ACHIEVEMENTS • *presentations*

Kyung Ja June, RN, PhD

Karen Hopcia, RN, ScD(c), APRN, BC, COHN-S

Eileen McNeely, RN, PhD

Minority Nurses: Stress and Injury Rates in the Hospital Setting

Work, Health & Stress: Making a Difference in the Workplace Conference, Miami, FL

Kyung Ja June, RN, PhD

Karen Hopcia, RN, ScD(c), APRN, BC, COHN-S

Eileen McNeely, RN, PhD

Attributing CVD to Work: The Contrast of the US and Korea

Optimizing Global Health through Nursing Science Conference, Chicago, IL

Elizabeth Johnson, RN, MSN, AOCN, AOCNS, HPCN

Bone Marrow Transplant for Acute Lymphoblastic Leukemia

Infusion Nurses Society Annual Meeting, Reno, NV

Robert Kacmarek, PhD, RRT, FCCM, FCCP, FAARC

Evidence Based Medicine and Mechanical Ventilation, and Future Directions in Mechanical Ventilation

California Society for Respiratory Care Annual Meeting, Rancho Mirage, CA

Robert Kacmarek, PhD, RRT, FCCM, FCCP, FAARC

Tracheal Gas Insufflation, and The NIV Mode on Critical Care Ventilators

Society of Critical Care Medicine Annual Meeting, San Francisco, CA

Robert Kacmarek, PhD, RRT, FCCM, FCCP, FAARC

What Ever Happened to the Respiratory Therapist Innovator?

American Association for Respiratory Care Annual Meeting, Las Vegas, NV

Robert Kacmarek, PhD, RRT, FCCM, FCCP, FAARC

Evidence Based Medicine and the Respiratory Care Practitioner, and Ventilator Associated Pneumonia – What Can We Do?!

Illinois Society for Respiratory Care Annual Meeting, Chicago, IL

Adele Keeley, RN, MA

Merging Palliative Care in the Critical Care Setting, A Robert Wood Johnson Foundation Study

Institute for Family-Centered Care, Dearborn, MI

Daniel Kerls, MBA, OTR/L

Ergonomics

American Society for Healthcare Central Service Professionals, Uncasville, CT

Janet King, RN

Motility and pH Procedures: the Nursing Prospective

33rd Annual Society of Gastroenterology Nurses and Associates (SGNA) Course, San Antonio, TX

Karon Konner, LICSW

Natascha Gundersen, LICSW

Incident Stress and the Role of Mental Health
National Disaster Medical System: Disaster Medical Assistance Team Winter Training Crawford Notch, NH

Barbara Levin, RN, BSN, ONC, LNCC

Unleashing the Leadership Within
National Association of Orthopaedic Nurses (NAON) Annual Congress, Boston, MA

Barbara Levin, RN, BSN, ONC, LNCC

Orthopaedic Complications, Musculoskeletal Tumors, Pediatric and Neuromuscular Orthopaedics
National Association of Orthopaedic Nurses National Conference, Boston, MA

Barbara Levin, RN, BSN, ONC, LNCC

The Legal Eyeopener
National Association of Orthopaedic Nurses National Conference, Boston, MA

Barbara Levin, RN, BSN, ONC, LNCC

When the Call Bell Rings: Appreciating Generational and Cultural Differences in Communication
National Gerontological Nursing Conference, Cincinnati, OH

Barbara Levin, RN, BSN, ONC, LNCC

When the Call Bell Rings: Appreciating Generational and Cultural Differences in Communication
American Society for Healthcare Risk Management, (ASHRM), National Conference, San Diego, CA

Mary McKenna Guanci, RN, MSN, CNRN

Hyperglycemia and the Effects on the Neuroscience Patient
American Association of Neuroscience Nurses Annual Conference, San Diego, CA

Janet Madigan, MS, RN, CNAA

Karen Nelson, MPA, RN
Patients First Initiative
Tennessee Hospital Association and Tennessee Organization of Nurse Executives CNO Summit Nashville, TN

Janet Madigan, RN, MS, CNAA

Nurse Staffing: Legislated Ratios/Regulation or Health Professional Initiatives
Quadramed Users Group Conference: Power Your Healthcare Vision to New Heights, Denver, CO

Janet Madigan, RN, MS, CNAA

Implementing Advocacy Strategies: The Massachusetts Response to Nurse Staffing Legislation
Illinois Hospital Association's, Working Together: Illinois Nurse Staffing Laws and You, Chicago, IL

Jacqueline Mulgrew, PT, CCS

Alison Squadrito, PT, DPT, GCS
Management of the Acute Care Patient
Educational Resources, Inc., Richmond, VA

Matthew Nippins, PT, DPT

Round Table Moderator – Designing an Inpatient Exercise Program
2006 North American Cystic Fibrosis Conference, Denver, CO

Matthew Nippins, PT, DPT

Session Moderator – Exercise: Physiology, Testing and Prescription
2006 North American Cystic Fibrosis Conference, Denver, CO

Matthew Nippins, PT, DPT

Abstract Reviewer
2006 North American Cystic Fibrosis Conference – PR/RT Section, Denver, CO

Lynn Oertel, RN, MS, ANP, CACP, CNS

A Prospective Look at Anticoagulation
Therapy: From the Inpatient to the Outpatient Setting
National Conference for Nurse Practitioners and Acute Care Clinicians, Philadelphia, PA

Lynn Oertel, RN, MS, ANP, CACP, CNS

Management Strategies for the Noncompliant Patient and a Credentialing Process for the Clinician
Seventh Annual Antithrombotic Therapy Symposium, Dearborn, MI

Lynn Oertel, RN, MS, ANP, CACP, CNS

Blood Clots
National Alliance for Thrombosis and Thrombophilia (NATT), Quincy, MA

Thomas Quinn, RN, MSN, AOCN

Respiratory Depression: Do We Really Need to be so Nervous?
Palliative Sedation by Any Other Name
Annual Meeting, American Society for Pain Management Nursing (ASPMN), Orlando, FL

Thomas Quinn, RN, MSN, AOCN

Acute Pain Management for the Opioid-Tolerant Patient
Acute Pain: Anytime, Anywhere Solutions Conference, Pain and Care Team, Green Bay, WI

Amee Seitz, PT, MS, OCS

Hip Bursitis in Runner
American Physical Therapy Association, Combined Sections Meeting, Sports Physical Therapy Section San Diego, CA

Elisabeth Steib, RN, BSN, AE-C

Strategies for Managing Food Allergies in School
Food Allergies: A Brighter Future
Conference of the Food Allergy and Anaphylaxis Network, Boston, MA

Mary Sullivan, RN, MS, APRN, BC

Integration of the Nurse Practitioner into Clinical Research
Rockefeller University, New York, NY

Dawn Tenney, RN, MSN

SCIP—Surgical Care Improvement Project
UHC Perioperative Services Council Meeting, Orlando, FL

Sasha Yampolsky, ScD, CCC-SLP

A Systematic Approach to Reading Fluency and Comprehension
2006 American Speech-Language and Hearing Association Annual Convention, Miami, FL

INTERNATIONAL

Sheila Burke, RN, BSN

Family and Patient Education
Nursing in the 21st Century, Spring 2006 International Conference, Wuhan University, Wuhan, China

Sheila Burke, RN, BSN

Trauma Nursing Skill Stations: Head Trauma
Nursing in the 21st Century, Spring 2006
International Conference, Wuhan University, Wuhan, China

Sheila Burke, RN, BSN

Traumatic Brain Injury
The 20th Anniversary Ceremony of Emergency Medicine Center, 2nd Affiliated Hospital
Zhejiang University and International Conference on Trauma Care, Hangzhou, China

Diane Carroll, RN, PhD

Changes in Fears and Concerns in Recipients of the Implanted Cardioverter Defibrillator
Workgroup of Cardiovascular Nursing, European Society of Cardiology, Bergen, Norway

Lin-Ti Chang, RN-BC, MSN, APRN-BC, CCRN

Nurse Case Management
The New Trends of Nursing Management Seminar, Beijing Nurses Association, Beijing, China

Lin-Ti Chang, RN-BC, MSN, APRN-BC, CCRN

Clinical Continuing Education for Nurses-Diversity and Flexibility
Nursing in the 21st Century, Spring 2006 International Nursing Conference, Wuhan University, Wuhan, China

Lin-Ti Chang, RN-BC, MSN, APRN-BC, CCRN

Trauma Nursing Skill Stations: Primary Survey
Nursing in the 21st Century, Spring 2006 International Nursing Conference, Wuhan University, Wuhan, China

Lin-Ti Chang, RN-BC, MSN, APRN-BC, CCRN

Clinical Continuing Education for Nurses-Diversity and Flexibility
The New Trends of Nursing Management Seminar, Zhejiang Province Nurses Association, Hangzhou, China

Lin-Ti Chang, RN-BC, MSN, APRN-BC, CCRN

Care of Blunt Cardiac Trauma
The 20th Anniversary Ceremony of Emergency Medicine Center, 2nd Affiliated Hospital Zhejiang University and International Conference on Trauma Care, Hangzhou, China

Patricia Connors, RNC, MS, WHNP

The Massachusetts General Hospital CNSRFT's Implementation of Evidence-Based Practice Programs in Response to the Identification of Common Patient Problems, Level of Preparation and Adequacy of Resources
Sigma Theta Tau's 17th International Nursing Research Congress Focusing on Evidence-Based Practice, Montreal, Canada

Dean Hess, PhD, RRT, FCCP, FAARC

Monitoring During Mechanical Ventilation
International Congress on Pediatric Pulmonology, Montreal, Canada

PROFESSIONAL ACHIEVEMENTS • *presentations*

Dean Hess, PhD, RRT, FCCP, FAARC

Advances in Mechanical Ventilation –
First Do No Harm
*International Symposium for Respiratory
Physiotherapy in the ICU, Curitiba, Brazil*

Dean Hess, PhD, RRT, FCCP, FAARC

Inhaled Nitric Oxide
*Alberta Respiratory Therapy Association,
Calgary, Alberta, Canada*

Dean Hess, PhD, RRT, FCCP, FAARC

Patient-Ventilator Synchrony During
Noninvasive Ventilation
*Chilean Intensive Medicine Congress,
La Serena, Chile*

Dean Hess, PhD, RRT, FCCP, FAARC

Advances in Mechanical Ventilation: Primum
Non Nocere (First Do No Harm)
*Asian Pacific Society of Respiriology Conference,
Kyoto, Japan*

**Robert Kacmarek, PhD, RRT, FCCM,
FCCP, FAARC**

Clinical Issues Surrounding the Use of Non-
Invasive Positive Pressure Ventilation, and
How and When to Perform Lung Recruitment
Maneuvers
*Czech Society of Anesthesiology and Intensive
Care Medicine Annual Meeting, Prague,
Czech Republic*

**Robert Kacmarek, PhD, RRT, FCCM,
FCCP, FAARC**

Non-Invasive Ventilation in Acute Hypoxemic
Respiratory Failure, and Current Definitions of
ARDS are not Useful for Clinical Trials
*26th International Symposium on Intensive Care
and Emergency Medicine, Brussels, Belgium*

**Robert Kacmarek, PhD, RRT, FCCM,
FCCP, FAARC**

Ideal PEEP and Lung Recruitment, and
Weaning the Difficult to Wean Patient
*XII Brazilian Congress of Intensive
Care Medicine, Recife, Brazil*

**Robert Kacmarek, PhD, RRT, FCCM,
FCCP, FAARC**

Non-Invasive Ventilation in Post-Extubation
Respiratory Failure, and High Frequency
Ventilation and Other Non-Conventional
Approaches to the Management of ARDS
*International Symposium for the 10th Anniver-
sary of Respiratory Care in Argentina, Buenos
Aires, Argentina*

**Robert Kacmarek, PhD, RRT, FCCM,
FCCP, FAARC**

Management of ARDS: Beyond the ARDS
Protocol, and Patient-Ventilator Synchrony:
How to Recognize and Correct It
*14th Congress of the Asia Pacific Association
of Critical Care Medicine, Beijing, China*

**Robert Kacmarek, PhD, RRT, FCCM, FCCP,
FAARC**

Tidal Volumes Do Not Initially Need to be 6 mL/
kg in Virtually All Patients Receiving Mechanical
Ventilation, and Recruitment Maneuvers Should
Routinely Be Used in
the Management of ALI and ARDS
*38th Respiratory Care Journal Conference,
Banff, Canada*

Donna Perry, RN, PhD

Nursing as a Transformative Voice
for Human Dignity
*Sigma Theta Tau International Nursing Honor
Society, Boston, MA*

Sasha Yampolsky, ScD, CCC-SLP

Pre-reading and Music Subskills
*Rhythm, Time and Temporal Organization
Conference, University of Edinburgh, Scotland*

PROFESSIONAL ACHIEVEMENTS • *poster presentations*

STATE AND REGIONAL

Virginia Capasso, RN, PhD, APRN, BC

Mary Jane O'Neill, MD
Patricia Mattos, RVT
Barbara Hazard, RN, PhD, FAAN
Comparison of Three Methods of Wound Volume Measurement: Preliminary Findings
Research Day, Alpha Chi Chapter of Sigma Theta Tau, Boston College, Chestnut Hill, MA

Diane Carroll, RN, PhD

Changes in Fears and Concerns in Recipients of an Implanted Cardioverter Defibrillator
Eastern Nursing Research Society Meeting, Cherry Hill, NJ

Regina Doherty, OTR/L, OTD

A Practical Approach to Promoting Evidence-Based Practice in the Clinical Setting
Massachusetts Occupational Therapy Association Annual Conference, Westwood, MA

Robert Dorman, PT, DPT, GCS

Jacqueline Mulgrew, PT, CCS
Minimally Invasive Hip Arthroplasty Versus Traditional Hip Arthroplasty Surgery: Early Functional Outcomes and the Impact on the Frequency and Duration of Acute Care Physical Therapy
American Physical Therapy Association, Massachusetts Chapter, Marlborough, MA

Kathleen Grinke, RN, MSN

Catherine Griffith, RN, MSN, SPRN, BC

Kathleen Walsh, RN, PhD(c)

Mary Larkin, RN, BSN

Virginia Capasso, RN, PhD, APRN, BC

Promoting Research Utilization: The Nursing Research Committee
Eastern Nursing Research Society meeting, Cherry Hill, NJ

Kelly Macauley, PD, DPT, GCS

Informational Poster on Massachusetts Geriatric Special Interest Group
American Physical Therapy Association, Massachusetts Chapter, Marlborough, MA

Bessie Manley RN, MPA/HA

Brenda Miller, RN, MSN

John Murphy, RN, MS

Marita Prater, RN, MS

Colleen Snyderman, RN, MSN

Aileen Tubridy, RN, MSN

Donna Perry, PhD, RN

Trish Gibbons, DNSc, RN

Creating a Culture of Leadership: The MGH Nurse Manager Leadership Development Program
Massachusetts Organization of Nurse Executives Meeting, Needham, MA

Theresa Michel, PT, DPT, MS, DSc, CCS

Case-Based Approach to Diagnostic Reasoning
American Physical Therapy Association, Massachusetts Chapter, Marlborough, MA

Elise Townsend, PT, PhD

Neurocognitive Function in School-Aged Children with Repaired Cyanotic Congenital Heart Defects (CHD)
MGH Scientific Advisory Committee (SAC) Annual Meeting, Boston, MA

NATIONAL

Jean Ashland, PhD, CCC-SLP

Laryngeal Cleft in Children: Dysphagia Assessment and Outcomes
Fourteenth Annual Dysphagia Research Society Meeting, Scottsdale, AZ

Pat Atkins, RN

Amy Levine, RN

Pam Wrigley, RN, MS CNS

Janet Quigley, RN, MSN

Ruth Bryan, RN, MSN, CCRN

A New and Improved Approach for Patient Safety in the Same Day Surgical Unit—Reviewing O.R. Policy, Procedures, and Equipment
Association of Perioperative Registered Nurses Congress, Washington, DC

Sharon Brothers, RN, BSN

The Role of the Orthopaedic Technician in the Operating Room
Association of Perioperative Nurses Congress, Washington, DC

Virginia Capasso, APRN, PhD, BC

Theresa Cantanno-Evans, RN, APRN, BC

Vivian Donahue, RN, MSN

Joanne Empoliti, RN, MSN, APRN,

BC, ONC

Erin Cox, RN, MS, CS

Susan Gavaghan, RN, APRN, BC, CNS

Catherine Griffith, RN, APRN, BC,

CCRN, CNS

Sioban Haldeman, RN, MSN, APRN, BC

Marion Jeffries, RN, CNS, FNP

Karen Fitzgerald, RN

Susan Kilroy, RN, MS, CNS

Cynthia LaSala, RN, MS

Ann Martin, RN, MSN, APRN

Mimi O'Donnell, RN, MS

Jill Pedro, RN, MSN, APRN, BC, ONC

Marion Phipps, RN, MS, CCRN, FAAN

Susan Stengrevics, RN, MSN, APRN,

BC, CCRN

Re-engineering the Infra-Structure for Wound Management in Acute Care
Symposium on Advanced Wound Care, Henry B. Gonzalez Convention Center, San Antonio, TX

Diane Carroll, RN, PhD

Sally Rankin, RN, PhD, FAAN
Collaborative Intervention Improves Adherence in Cardiac Elders
National State of the Science Congress, Washington, DC

Barbara Cashavelly, RN, MSN

Katie Binda, MSE, LICSW

Elizabeth Alterman, BS

Carol Ghiloni, RN, MSN

Meeting the Needs of Support Staff at a Patient and Family-Centered Oncology Center
Oncology Nursing Society Congress, Boston, MA

Gerard Cronin, BSN

Ellen Anderson, MS, RD, LDN

Dayna Bradstreet

Karen Hopcia, RN, ScD(c), APRN, BC,

COHN-S

David M. Nathan, MD

Eighty Years of Clinical Research on Ward IV: The Future for Translational Research
General Clinical Research Centers Annual Meeting, Washington, DC

Robert Dorman, PT, DPT, GCS

Jacqueline Mulgrew, PT, CCS

Minimally-Invasive Hip Arthroplasty Versus Traditional Hip Arthroplasty 2006 Surgery: Early Functional Outcomes and the Impact on the Frequency and Duration of Acute Care Physical Therapy
American Physical Therapy Association, Combined Sections Meeting, San Diego, CA

Bonnell Glass, RN, MSN

Integrating Clinical Research Nursing at the Massachusetts General Hospital
American Organization of Nurse Executives Annual Meeting, Orlando, FL

PROFESSIONAL ACHIEVEMENTS • *poster presentations*

Sioban Haldeman, RN, MSN, APRN, BC
Marian Jeffries, MSN, APRN, BC, FNP-C
Catherine Griffith, MSN, APRN,
BC, CCRN

Elizabeth Johnson, MSN, RN, AOCNC
Cynthia Lasala, RN, MS
Ann Martin, RN, MSN, CS-ANP
Jill Pedro, RN, MSN, ONC

Marion Phipps, RN, MS, CRRN, FAAN
 CNS Use of Data from Staff Perception
 Survey of the Practice Environment Survey
 to Influence the Development of Staff Nurse
 Education Programs
*National Teaching Institute, American Association
 of Critical Care Nurses, Anaheim, CA*

Andrea Hansen, RN, MSN, OCN
Janet Gail Umphlett, RN, OCN
Jeanne Griggin, MSN, APRN, BC, AOCN
Pat Ostler, RN, BSN, MHS
Esther O’Dette, RN, ASN
Cynthia Moreira, RN, BSN
Mimi Bartholomay, RN, MSN, AOCN, CNS

Barbara Cashavelly, RN, MSN, AOCN
 Development of Evidenced-Based Nursing
 Care Regarding Oral Care for Patients
 Undergoing Cancer Treatment
Oncology Nursing Society Congress, Boston, MA

Karen Hopcia, RN, ScD(c), APRN, BC,
COHN-S
 Craig Packard, MD, FAAFP
 Robert Weker, BA
 An Ergonomic Assessment of Outpatient and
 Phlebotomy Activities on a Research Unit.
*General Clinical Research Centers Annual
 Meeting, Washington, DC*

Eileen Joyce, LICSW
Michelle Hazelwood, LICSW
Stacy Chandle, LICSW
 It Takes a Village: A Group Approach to
 Individual Social Work Advancement
*AOSW conference, Oncology Social Workers
 Steering the Path: Quality of Life in the Cancer
 Experience, Minneapolis, MN*

Karen Lipshires, RN, BSN
 Helping Nurses Utilize Computer Based
 Applications: The Role of the Chemotherapy
 Order Set Coordinator
Oncology Nursing Society Congress, Boston, MA

Karen Lipshires, RN, BSN
 Deborah Verrier, RN, BSN
 Ellen Toomey-Mathews, RN, BSN
 Damiana Maloof, RN, BSN
 Karen Schulte, RN, BSN
 Ensuring Clinical Trial Treatment Accuracy
 with a Computerized Chemotherapy Template
Oncology Nursing Society Congress, Boston, MA

Lori Lucas, RN, BSN, CNRN
 Withdrawal of Care in a Neuroscience Setting:
 A Practice Guide for Nurses
*American Association of Neuroscience Nurses
 Annual Conference, San Diego, CA*

Sharon Maginnis, RN, BSN
 Jane Hubbard, MS, RD, LDN
Karen Hopcia, RN, ScD(c), APRN, BC,
COHN-S
 Complementary and Alternative Medicine
 Survey for Research Subjects
*General Clinical Research Centers Annual
 Meeting, Washington, DC*

Mary McAdams, RN, BSN
Laura Sumner, RN, MEd, MBA,
MSN, ONC
Debra Burke, RN, MSN, MBA
Mary Sullivan, RN, APRN, BC
Marion Growney, MSN, ACNP
Jerene Bitondo, MNP, PA
Mary Ellen Heike, RN, MMHS
 Designing and Implementing an Advanced
 Practice Clinician Learning Needs Assessment
*National Nursing Staff Development
 Organization (NNSDO), Orlando, FL*

Mary McAdams, RN, BC, BSN
Laura Sumner, RN, MEd, MBA, APRN-BC,
ONC
Gail Alexander, RN, BSN, CCRN
Dorothy Jones, RNC, EdD, FAAN
 Evaluating the Drug Dosage Calculation
 Guide on the Registered Nurses’ Achievement
 Scores and Multi-step Calculations on an
 Orientation Medication Assessment
*33rd Annual Professional Nurse Educator
 Group Conference, Burlington, VT*

Mary McKenna Guanci, RN, MSN, CNRN
Marion Phipps, RN, MSN, FAAN
 Reduction of Urinary Tract Infection on a 78-
 bed Neuroscience Service: A Quality Initiative
*American Association of Neuroscience Nurses
 Annual Conference, San Diego, CA*

Kathleen Myers, MSN, RN
 Confronting Health Care Disparities through
 Culturally Competent Care
*National Association of Orthopaedic Nurses
 Annual Congress (NAON), Boston, MA*

Danny Nunn, MS, CCC-SLP
 Successful Revision of Laryngeal/Tracheal
 Diversion: Case Study
*Fourteenth Annual Dysphagia Research
 Society Meeting, Scottsdale, AZ*

Danny Nunn, MS, CCC-SLP
 Swallowing After Pharyngeal Colonic
 Interposition – Review of Six Cases
*Fourteenth Annual Dysphagia Research Society
 Meeting, Scottsdale, AZ*

Christopher Robbins, RN, CGRN
Jane Harker, MS, BSN, RN, CGRN
 The DAVE GI Nursing Project: An Innovative
 Way to Share Information
*33rd Annual Society of Gastroenterology Nurses
 and Associates (SGNA) Course, San Antonio, TX*

Kristen Samatis, BS, CHES
 Disability Access Center within a
 Consumer Health Library Setting
*Patient and Family Learning Center: Health
 Care Education Association, Atlanta, GA*

Kimberly Smith, RN, BSN
Karen Hopcia, RN, ScD(c), APRN,
BC, COHN-S
Helen Ann Higgins, RN, BSN, MHA
 Megan Miller, BS
 Rachel Cohen, BA
 Sarah Comeaux, BA
 Benjamin Leder, MD
 A Pilot Study: Does Increased Education of
 Medication Side Effects Increase Subjects’
 Reporting of Such Side Effects
*General Clinical Research Centers Annual
 Meeting, Washington, DC*

Colleen Snyderman, RN, MSN
Bessie Manley, RN, MPN/HA
Brenda Miller, RN, MSN
John Murphy, RN, MS
Marita Prater, RN, MS
Aileen Tubridy, RN, MSN
Donna Perry, RN, PhD
Trish Gibbons, RN, DNSc
Creating a Culture of Leadership:
The MGH Nurse Manager Leadership
Development Program
*Massachusetts Organization of Nurse
Executives (MONE)*

Linda Steiner, PT, DPT, MS, OCS
Experiences With an Early Pregnancy
Educational Program
*American Physical Therapy Association,
Combined Sections Meeting, San Diego, CA*

Elise Townsend, PT, PhD
Neurocognitive Sequelae of Repaired
Cyanotic Congenital Heart Disease (CHD)
*American Physical Therapy Association,
Combined Sections Meeting, in San Diego, CA*

INTERNATIONAL

Elyse Levin-Russman, LICSW
Partnering with Families to Enhance
Clinical Services: The Development
of a Family Advisory Committee
*Association of Pediatric Oncology Social
Workers (APOSW) Annual Conference,
Toronto, Ontario, Canada*

CLINICAL RECOGNITION PROGRAM

The MGH Clinical Recognition Program serves as a formal way to recognize excellence in practice, encourage professional development and build a diverse community of reflective practitioners within Patient Care Services.

Applicants work with their directors and clinical specialists to analyze their practice relative to clinician-patient relationship, clinical knowledge and decision-making, teamwork and collaboration and movement (for Occupational Therapy and Physical Therapy professionals). Criteria within these themes define four levels of clinical practice: Entry, Clinician, Advanced Clinician and Clinical Scholar.

2006 ADVANCEMENTS

ADVANCED CLINICIAN

J. Patrick Birkemose, RN
Rachel Bolton, RN
Linda Cahoon, RN
Elizabeth Cole, PT
Eileen Collins, PT
Janet Doherty, RN
Denise Dreher, RN
Noel DuPlessis, RN
Charlene Gorden, RN
Marilyn Healey, RN
Cheryl Hersh, SLP
Jennifer Hovsepian, RN
Susan LaGambina, RRT
Marissa Legare, RN

Hirlanda Linse, RN
Kelly Macauley, PT
Jennifer Mathisen, RN
Amy McCarthy, RN
Jennifer McGaffigan, RN
Kathleen Mortimer, RN
Katherine O'Meara, RN
Christina Perino, RRT
Brenda Pignone, RN
Sheila Preece, RN
Maryalyce Romano, RN
Carole-Ann Sheridan, RN
Ellen Silvius, RN
Melanie Struzzi, PT

Janet Umphlett, RN
Marjorie Voltero, RN
Alison Walsh, RN
Lorraine Walsh, RN
Karen Ward, RN
Tracey Zachary, RN
**Mary Louisa Zwirner,
LICSW**

CLINICAL SCHOLAR

Sheila Brown, RN
Kathleen Carr, RN
Cynthia Finn, RN
Kelley Grealish, RN
Ann Hession, RN
Robert Larocque, RN
Corrina Lee, RN
Barbara Levin, RN
**Elyse Levin-Russman,
LICSW**
Linda Roth, RN

PROFESSIONAL ACHIEVEMENTS • *officers*

MGH

Adele Keeley, RN, MA

Member, Board of Directors, MGH
School of Nursing Alumnae Association

STATE AND REGIONAL

Patricia Atkins, RN, CNOR, BSN

Treasurer, Association of Perioperative
Registered Nurses, (AORN), Mass Chapter 1

Kathryn Brush, RN, MS, CCRN, FCCM

Member, Advanced Practice Registered Nurse
Task Force, Massachusetts Board of
Registered Nursing

Laura Busick, PT, DPT, MS, NCS

Membership Chair, American Physical
Therapy Association – Massachusetts
Chapter, Boston

Joanne Empoliti, RN, MSN, APRN, ONC

President, National Association of Orthopaedic
Nurses, Massachusetts Chapter

Carol Ghiloni, RN, MSN, OCN

Co-Chair, Membership Committee, Boston
Oncology Nursing Society, (BONS)

Nancy Goode, PT, DPT, MS

Chair, Nominating Committee, American
Physical Therapy Association of Massachusetts

Jeanette Ives Erickson, RN, MS

Member, Harvard Humanitarian Initiative
Executive Committee, Harvard University
Member, Board of Directors, The Benson-
Henry Institute for Mind Body Medicine,
Chestnut Hill, MA

Member, Board of Directors and Senior
Associate, The Institute for Nursing
Healthcare Leadership, Boston, MA

Elizabeth Johnson, RN, MSN, AOCN, AOCNS, HPCN

Chapter President, Boston Oncology
Nursing Society

Aimee Klein, PT, DPT, MS, OCS

Legislative Committee Member, American
Physical Therapy Association, Massachusetts
Chapter, Boston, MA

Cynthia Ann LaSala, RN, MS

Delegate, American Nurses Association,
(ANA)
Board Member, American Nurses Association
(ANA) Center for Ethics and Human Rights
Advisory Board
Massachusetts Association of Registered Nurses
(MARN)

Amy Levine, RN, BSN

Nurse Leader, Sigma Theta Tau-Gamma
Epsilon Chapter, Boston

Kelly Macauley, PT, DPT, GCS

Secretary, Geriatric Special Interest Group,
American Physical Therapy Association –
Massachusetts Chapter, Boston
Secretary, Northern Metro District of APTA
of Massachusetts
American Physical Therapy Association,
(APTA)

Janet Madigan, RN, MS, CNAA

Immediate Past President, Massachusetts
Organization of Nurse Executives

Charles McCorkle, LICSW

Honorary appointment, Clinical Instructor,
Smith College School for Social Work

Mary McKenna Guanci, RN, MS, CNRN

President, Boston Chapter, Neuroscience
Nurses Association

Kathleen Myers, RN, MSN, APRN, BC

Member, Board of Directors, National
Association of Orthopaedic Nurses,
Massachusetts Chapter

Rev. Celestino Pascual, STL

Coordinator, Filipino Apostolate of the
Archdiocese of Boston
Member, Board of Directors, New England
Society of Philippine Health Professionals

Jill Pedro, RN, MSN, APRN

Secretary, National Association of Orthopaedic
Nurses, Massachusetts Chapter

Monica Pessina, OTR/L, PhD

Member, Americans with Disabilities
Committee, West Newbury, Massachusetts

Gayle Peterson, RN

Member, City of Melrose, MA, Human
Rights Commission

Laura Ryan, RN, OCN

Member, Board of Directors, New England
Coalition of Cancer Survivorship

Melanie Struzzi, PT, DPT, MHS

Treasurer, Geriatric Special Interest Group,
American Physical Therapy Association of
Massachusetts

Alison Squadrito, PT, DPT, GCS

Bylaws Chair, American Physical Therapy
Association of Massachusetts
Founder and Chair, Geriatric Special Interest
Group, American Physical Therapy Associa-
tion of Massachusetts

Carol Tyksienski, RN, MS, APRN, BC

Member, ESRD Network of New England
Medical Review Board

Philip Waithe, Jr., RN

Member, Board of Registration in Nursing

NATIONAL

Tessa Goldsmith, MA, CCC/SLP, BRS-S

Member, Ad Hoc Committee: Graduate Curriculum on Swallowing and Swallowing Disorders, Special Interest Division 13, Swallowing and Swallowing Disorders, American Speech-Language-Hearing Association

Jane Harker, MS, BSN, RN, CGRN

Member, Nominations and Elections Committee of the Society of Gastroenterology Nurses and Associates (SGNA)

Dean Hess, PhD, RRT, FCCP, FAARC

Associate Editor, *Respiratory Care Journal*

Jeanette Ives Erickson, RN, MS

Member, Operational Review Team, National Institutes of Health, Warren G. Magnuson Clinical Center, Bethesda, MD
Member, National Advisory Committee and Nurse Leadership Association, Board of Directors, Robert Wood Johnson Executive Nurse Fellows Program, Princeton, NJ

Elizabeth Johnson, RN

Fellow, Oncology Nursing Society Leadership Development Institute

Robert Kacmarek, PhD, RRT, FCCM, FCCP, FAARC

Forrest M. Bird Lifetime Achievement Award, American Association for Respiratory Care

Janet King, RN

Co-facilitator, Manometry Electronic Special Interest Group (e-SIG)

Karon Konner, MSW, LICSW

Member, National Disaster Medical System (a branch of FEMA), Behavioral Health Working Group

Peter Moran, RN

President-Elect, Case Management Society of America (CMSA)

Janet Mulligan, RN, MS

Member, Publications Committee, Association for Vascular Access (AVA)

Kristin Parlman, PT, DPT, NCS

Nominating Committee Chair, American Physical Therapy Association, Neurology Section Stroke Special Interest Group Member, Neurology Section Awards Committee, American Physical Therapy Association

Georgia Peirce

Member, Board of Directors, The Center for Nursing Advocacy
Member, Duke University Health System PSLF Executive Steering Committee
Member, Health Research & Education Trust (HRET) Fellowship Board of Advisors

Gayle Peterson, RN

Member, House of Delegates of the American Nurses Association (ANA)

Thomas Quinn, RN, MSN, AOCN

Nominating Committee Member, American Society for Pain Management Nursing, (ASPMN)

Amee Seitz, PT, DPT, OCS

Committee Member, Shoulder Special Interest Group, Sports Physical Therapy Section of the American Physical Therapy Association, Alexandria, VA

Sandra Silvestri, RN, MS, CNOR

Member, Advanced Practice, Perioperative Nurses with Masters Degree Task Force, Association of Perioperative Registered Nurses, National

Elisabeth Stieb, RN, BSN, AE-C

Member, National Board of Directors, Asthma and Allergy Foundation of America
Program Committee Member, Food Allergy and Anaphylaxis Network

PROFESSIONAL ACHIEVEMENTS • *publications*

AUTHORSHIP OF BOOKS AND CHAPTERS IN BOOKS

Sharon Brackett, RN, BS, CCRN

Joan Creasia, RN, PhD
Barbara Parker, RN, PhD, FAAN
Chapter "Profile in Practice, Ethical Dimensions of Nursing and Health Care" in *Conceptual Foundations: The Bridge to Professional Nursing Practice*
4th Edition
Elsevier

Constance Dahlin, APRN, BC, PCM

Tessa Goldsmith, Clinical Specialist
Chapter "Dysphagia, Dry Mouth, and Hiccups" in *Oxford Textbook of Palliative Nursing*
2nd Edition
Oxford University Press

Constance Dahlin, APRN, BC, PCM

David Giansiracusa, MD
Chapter "Communication," in *Oxford Textbook of Palliative Nursing*
2nd Edition
Oxford University Press

Constance Dahlin, APRN, BC, PCM

Chapter "Palliative Medicine" in *The Massachusetts General Hospital Handbook of Pain Management*
3rd Edition
Lippincott, Williams and Wilkins

Constance Dahlin, APRN, BC, PCM

Chapter "Anxiety" in *Clinical Manual for the Oncology Advanced Practice Nurse*
2nd Edition
Oncology Nursing Society

Constance Dahlin, APRN, BC, PCM

Chapter "Depression" in *Clinical Manual for the Oncology Advanced Practice Nurse*
2nd Edition
Oncology Nursing Society

Constance Dahlin, APRN, BC, PCM

Chapter "Anxiety" in *Clinical Manual for the Oncology Advanced Practice Nurse*
2nd Edition
Oncology Nursing Society

Dean Hess, PhD, RRT, FCCP, FAARC

Chapter "Arterial blood gases" in *Pulmonary/Respiratory Therapy Secrets*
3rd Edition
Hanley and Belfus

Robert Kacmarek, PhD, RRT, FCCM, FCCP, FAARC

Daniel Chipman, RRT
Chapter "Basic Principles of Ventilator Machinery" in *Principles and Practice of Mechanical Ventilation*
2nd Edition
McGraw-Hill Publishers

Robert Kacmarek, PhD, RRT, FCCM, FCCP, FAARC

Atul Malhotra, MD
Chapter "Equipment Required for Home Mechanical Ventilation" in *Principles and Practice of Mechanical Ventilation*
2nd Edition
McGraw-Hill Publishers

Robert Kacmarek, PhD, RRT, FCCM, FCCP, FAARC

Jesús Villar, MD, PhD, FCCM
Atul Malhotra, MD
Chapter "Modes of Mechanical Ventilation" in *Clinical Critical Care Medicine*
Mosby, Elsevier Publishers

Barbara Levin, RN, BSN, ONC, LNCC

Nancy Morris, RN, PhD, CS
Chapter "Complications in Orthopaedics," in *Core Curriculum for Orthopaedic Nursing*
5th Edition
National Association of Orthopaedic Nurses, 2006

Atul Malhotra, MD

Robert Kacmarek, PhD, RRT, FCCM, FCCP, FAARC

Chapter "Mechanical Ventilation" in *Benumof's Airway Management*
2nd Edition
Elsevier Publishers

Susan Morash, RN, BSN, MA

Chapter "Non-Events and Avoiding Reality" in *The Negotiator's Fieldbook*
1st Edition
American Bar Association, Section of Dispute Resolution, 2006

Brenda Nevidjon, RN, MSN

Jeanette Ives Erickson, RN, MS
Chapter "The Nursing Shortage: Solutions for the Short and Long Term" in *A History of Nursing Ideas*
Jones & Bartlett Publishers

Donna Perry, RN, PhD

Katherine Gregory, RN, PhD
Chapter "Global Applications of the Cosmic Imperative for Nursing Knowledge Development" in *Nursing Knowledge Development*
Springer Publications

Jesús Villar, MD, PhD, FCCP

Robert Kacmarek, PhD, RRT, FCCM, FCCP, FAARC

Chapter "Ventilator Associated Lung Injury" in *Clinical Critical Care Medicine*
Mosby Elsevier Publishers

ARTICLES

Patricia Atkins, RN, CNOR, BSN

Can Your Staff Restart Your Anesthesia Machines?
Outpatient Surgery Magazine

Patricia Atkins, RN, CNOR, BSN

Does Your Flash Policy Need Refreshing?
Outpatient Surgery Magazine

J. Andrews Billings, MD

Adele Keeley, RN, MA

Joel Sauman, MD
Alex Cist, MD

Edward Coakley, RN, MEd, MA, MSN

Constance Dahlin, RN, MSN, ANP

Paul Montgomery, PhD
B. Taylor Thompson, MD

Marilyn Wise, MSW, LICSW

Massachusetts General Hospital Palliative Care Nurse Champions
Merging Cultures: Palliative Care Specialists in the Medical Intensive Care Unit
Critical Care Medicine, Supplement, Improving the Quality of End-of-Life Care in the ICU

Melissa Belkin, LICSW

The Role of the NICU Social Worker
Preemie Magazine

João Borges, MD
Valdelis Okamoto, MD
Gustavo Matos, MD
Maria Caraméz, MD, PhD
Paula Arantes, MD

F. Barros, MD
C. D. Souza, MD

Josué Victorino, MD

Robert Kacmarek, PhD, RRT, FCCM, FCCP, FAARC

Carmen Silvia Valente Barbas, MD
Carlos Roberto Ribeiro Carvalho, MD
Marcelo Britto Passos Amato, MD
Reversibility of Lung Collapse and Hypoxemia in Early Acute Respiratory Distress Syndrome
American Journal of Respiratory and Critical Care Medicine

Kathryn Brush, RN, MS, CCRN, FCCM

Marc DeMoya, MD

Trauma System Design
Critical Connections

Janet Callahan, PT, MS

Kristen Parlman, PT, DPT, NCS

Elise Townsend, PT, PhD

Perspective: Impact of III STEP Conference on Clinical Practice
Journal of Neurologic Physical Therapy

Virginia Capasso, RN, APRN, PhD, BC

Cheryl Codner, RN, BSN

Gregory Nuzzo-Meuller, RN, BA, BSN, MDiv

Erin Cox, RN, MS, APRN-BC, CCRN

Sharon Bouvier, RN, MS

Peripheral Arterial Sheath Removal Program: A Performance Improvement Initiative
Journal of Vascular Nursing

Maria Caraméz, MD, PhD
Guilherme Schettino, MD, PhD
Klaudiusz Suchodolski, MD
Tomoyo Nishida, MD

R. Scott Harris, MD

Robert Kacmarek, PhD, RRT, FCCM, FCCP, FAARC

The Impact of Endotracheal Suctioning on Gas Exchange and Hemodynamics During Lung-Protective Ventilation in Acute Respiratory Distress Syndrome
Respiratory Care

Diane Carroll, RN, PhD

Sally Rankin, RN, PhD, FAAN
Comparing Nursing Interventions in Older Unpartnered Adults After Myocardial Infarction
European Journal of Cardiovascular Nursing

Amanda Coakley, RN, PhD

Anand Dighe, MD, PhD
Kent Lewandrowski, MD
Analysis of a Laboratory Critical Value Reporting at a Large Academic Medical Center
American Journal of Clinical Pathology

Debra Coglianese, PT, DPT, OCS, ATC

Review: Muscles: Testing and Function with Posture and Pain
Physical Therapy

J. Randall Curtis, MD, MPH

Deborah Cook, MD

Richard Wall, MD, MPH

Derek Angus, MD, MPH

Julian Bion, MD, FRCP, FRCA

Robert Kacmarek, PhD, RRT, FCCM, FCCP, FAARC

Sandra Kane-Gill, PharmD, MSc
Karin Kirchhoff, RN, PhD, FAAN
Mitchell Levy, MD

Pamela Mitchell, PhD, CNRN

Rui Moreno, MD, PhD

Peter Pronovost, MD, PhD

Kathleen Puntillo, RN, DNSc, FAAN

Intensive Care Unit Quality Improvement:

A “How-To” Guide for the Multidisciplinary Team

Critical Care Medicine

Constance Dahlin, APRN, BC, PCM

It Takes My Breath Away: End Stage COPD-Part 2

Home Healthcare Nurse

Constance Dahlin, APRN, BC, PCM

End Stage Dementia
HPNA Compendium

Marie Egan, RN, MS

Clinical Dashboards Impact on Workflow, Care Quality, and Patient Safety
Critical Care Nursing Quarterly

Jean Fahey, RN, MSN, CCRN, CNRN, APRN, BC

Carolyn DiMaggio, RN, BSN

High Dose Methotrexate and Primary Central Nervous System Lymphoma
Journal of Neuroscience Nursing

Brian French, RN, C, MS

The Simulation Program at MGH's Norman Knight Nursing Center for Clinical and Professional Development
Forum

Dennis Gaudet, RRT

Mathew Branconnier, RRT

Dean Hess, PhD, RRT, FCCP, FAARC

Abstract: Open Versus Closed Suction Delivery During High Frequency Oscillatory Ventilation
Respiratory Care

Susan Gavaghan, APRN, BC, CCRN, MSN

Marian Jeffries, APRN, BC, FNP-C, MSN

Your Patient's Receiving Noninvasive Positive-Pressure Ventilation
Nursing 2006 Photo Guide, Nursing 2006

Elise Gettings, RN, MPA, CRRN

Kathryn Brush, RN, MS, CCRN, CCNS, FCCM

Elizabeth VanCott, MD

William Hurford, MD, FCCM

Outcome of Postoperative Critically Ill Patients with Heparin-Induced Thrombocytopenia: an Observational Retrospective Case-Controlled Study
Critical Care

Karim Girgis, MD

Hala Hamed, MD

Robert Kacmarek, PhD, RRT, FCCM, FCCP, FAARC

Yehia Khater, MD

A Decremental PEEP Trial Identifies the PEEP Level that Maintains Oxygenation After Lung Recruitment
Respiratory Care

PROFESSIONAL ACHIEVEMENTS • *publications*

Kelly Gonnert, BS, RRT

Mathew Branconnier, RRT

Dean Hess, PhD, RRT, FCCP, FAARC

Abstract: Humidification During Noninvasive Positive Pressure Ventilation
Respiratory Care

Grace Good, RN, MS

Sick to Death

Journal of Clinical Ethics

Christina Graf, RN, PhD

ADN to BSN: Lessons from Human Capital Theory
Nursing Economics

Debra Guthrie, RN, CRNI

Practice Reviewer: 2006 Infusion Nursing Standards of Practice
Supplement to: January/February 2006 Journal of Infusion Nursing

Cecile Hannon, RN

Let Us Pray Together

Narrative: Tea and Toast for the Perioperative Nurse's Spirit

AORN Publications

Dean Hess, PhD, RRT, FCCP, FAARC

Heliox and Noninvasive Positive-Pressure Ventilation: A Role for Heliox in Exacerbations of Chronic Obstructive Pulmonary Disease?
Respiratory Care

Dean Hess, PhD, RRT, FCCP, FAARC

Monitoring During Mechanical Ventilation.
Paediatric Respiratory Review

Dean Hess, PhD, RRT, FCCP, FAARC

Noninvasive Ventilation in Neuromuscular Disease: Equipment and Application
Respiratory Care

Dean Hess, PhD, RRT, FCCP, FAARC

B. Taylor Thompson, MD

Patient-Ventilator Dyssynchrony During Lung Protective Ventilation: What's a Clinician to Do?
Critical Care Medicine

Mary Ellen Heike, RN, MMHS

A Woman's Guide to Primary Care - Guía de Atención Primaria Papa La Mujer
El Planeta

Marian Jeffries RN, MSN, APRN BC, FNP-C

Susan Gavaghan, RN, MSN, APRN BC, CCRN

Care of the Adult Patient Receiving Continuous Positive Pressure Ventilation (CPAP) or Noninvasive Positive Pressure Ventilation (NPPV)
Nursing 2006

Robert Kacmarek, PhD, RRT, FCCM, FCCP, FAARC

Featured on the cover and in an article, Respiratory Care Researcher Robert Kacmarek Knows the Thrill of Scientific Discovery
AARC Times

Robert Kacmarek, PhD, RRT, FCCM, FCCP, FAARC

Editorial NPPV in Acute Respiratory Failure: Is it Time to Reconsider Where it May be Applied?
Respiratory Care

Robert Kacmarek, PhD, RRT, FCCM, FCCP, FAARC

Herbert Wiedemann, MD
Philip Lavin, PhD
(continued)

Mark Wedel, MD, JD

Ahmet Tütüncü, MD, PhD

Arthur Slutsky, MD

Partial Liquid Ventilation in Adult Patients With Acute Respiratory Distress Syndrome
American Journal of Respiratory and Critical Care Medicine

Robert Kacmarek, PhD, RRT, FCCM, FCCP, FAARC

Editorial, Ventilatory Management of ARDS: High Frequency Oscillation and Lung Recruitment!
Critical Care

Robert Kacmarek, PhD, RRT, FCCM, FCCP, FAARC

Jesús Villar, MD, PhD, FCCM
Letter to the Editor, Lung Recruitment in Patients With ARDS
New England Journal of Medicine

Robert Kacmarek, PhD, RRT, FCCM, FCCP, FAARC

Editorial, Lung Protection: The Cost in Some is Increased Work of Breathing. Is it Too High?
Respiratory Care

Susan LaGambina, RRT

Thomas Stelfox, Critical Care Fellow
Jean Kwo, MD

Dean Hess, PhD, RRT, FCCP, FAARC

Elise Gettings, RN
Luca Bigatello, MD
Ulrich Schmidt, MD

Abstract "Incidence of Tracheostomy Tube Malposition in Patients Receiving Long-Term Mechanical Ventilation"
Respiratory Care

Thomas Stelfox, Critical Care Fellow

Jean Kwo, MD

Dean Hess, PhD, RRT, FCCP, FAARC

Elise Gettings, RN

Susan LaGambina, RRT

Luca Bigatello, MD

Ulrich Schmidt, MD

Tracheostomy Tube Malposition in Patients

Admitted to a Mechanical Ventilation

Weaning Unit

Proceedings of the American Thoracic Society

Mary Lavieri, RN

Evidence-based Practice in the ICU

Merrimack Valley Chapter Newsletter

Janet Madigan, RN, MS, CNAA

Profiled: A Toolbox for Survival: The Future of Nurse Leadership Depends Upon an Intelligent Combination of Mentoring and True-To-Life Classroom Experiences
Mass. Hospitals Go Public: Staffing Stats Now Public Domain Throughout the State
Nursing Spectrum

Janet Madigan, RN, MS, CNAA

Nurse Staffing Issues
Worcester Medicine

Janet Madigan, RN, MS, CNAA

Profiled: One of Five State Nursing Organization Presidents That Were Graduates of Northeastern University
Bouve College of Health Sciences Vital Signs

Tracy Magee, RN, PhD

Susan Lee, RN, PhD

Karen Giuliano, RN, PhD, FAAN

Barbara Munro, RN, PhD, FAAN

(continued)

Generating New Knowledge from Existing Data: The Use of Large Data Sets for Nursing Research
Supplement to: March/April *Nursing Research*

Heidi Matthew, RRT

Dean Hess, PhD, RRT, FCCP, FAARC

Does a Speaking Valve Decrease Inspired Humidity?

Respiratory Care

Mary McCormick-Gendzel, RN, BSN, BC, CRNI

Martha Jurchak, RN, PhD, CS

A Pathway for Moral Reasoning in Home Healthcare

Home Healthcare Nurse

Mary McKenna Guanci, RN, MS, CNRN

Guy Rordorf, MD

Rapid Infusion of Cold Saline as Adjuvant Treatment of Fever in Patients with Brain Injury
Neurology

Rev. Monsignor Felix Ojimba, PhD, NACC Cert.

The Ndo Flock of Birds: A Model for Group Support and Care
Vision

Poonam Pardasany, PT

Advantage of Limb Salvage Over Amputation for Proximal Lower Extremity Tumors
Clinical Orthopaedics and Related Research

Kathryn Pazola, RN, MSN, CPON

Learning to Dance with Sarah
Nursing Spectrum

Monica Pessina, OTR/L, PhD

Differential Effects of Estradiol, Progesterone, and Testosterone on Vaginal Structural Integrity
Endocrinology

Alex Petruska, PT, SCS, LAT

In Vivo Kinematics of the Knee After Anterior Cruciate Ligament Reconstruction
American Journal of Sports Medicine

Eric Poon, MD, MPH

Sally Millar, RN, MBA

Barry Blumenfeld, MD, MSc

Claus Hamann, MD, MSc

Alexander Turchin, MD, MSc

Erin Graydon-Baker

Patricia McCarthy, PA-C, MHA

John Poikonen, PharmD

Perry Mar, PhD

Jeffrey Schnipper, MD, MPH

Robert Hallisey, PharmD

Sandra Smith

Christine McCormack

Marilyn Paterno, BS

Christopher Coley, MD

Andrew Karson, MD, MPH

Henry Chueh, MD

Cheryl Van Putten

Margaret Clapp, PharmD

Ishir Bhan, MD

Gregg Meyer, MD

Tejal Gandhi, MD, MPH

Carol Broverman, PhD

Design and Implementation of an Application and Associated Services to Support Interdisciplinary Medication Reconciliation Efforts at an Integrated Healthcare Delivery Network
Journal of the American Medical Informatics Association

Laurel Radwin, RN, PhD

Gail Wilkes, RN, MS

Linda Curtin, RN, PhD

Christine Saba, RN, BS

Lisa Tracey, RN, MS

Joanne Garvey, RN, MS

John Whitehouse, RN, BS

Camille Sanabria, RN, BS

Liliana Teixeira

Mary Hackel, RN, BS

Kim Willis, RN, MS

Abstract “Enhancing Patients’ Trust in Oncology Nursing Care: A Challenge for Nursing Leaders”

Oncology Nursing Forum

Jennifer Repper-DeLisi, RN, MS

Susan Kilroy, RN, MS

We Need to Meet

Journal of Clinical Ethics

Ellen Robinson, RN, PhD

Grace Good, RN

Suzanne Burke, RN

Talking With Lorraine’s Mother and Sister,

Five Months After Her Death

Journal of Clinical Ethics

Ellen Robinson, RN, PhD

Marion Phipps, RN, MS, CRRN, FAAN

Ruth Purtilo, PhD

Angelica Tsoumas, MSW, LICSW

Marguerite Hamel-Nardozzi, MSW, LICSW

Complexities in Decision-Making for Persons with Disabilities Nearing End of Life
Topics in Stroke Rehabilitation

James Stahl, MD

Warren Sandberg, MD

Richard Wiklund, MD

Marie Egan, RN, MS

Julian Goldman, MD

Keith Isaacson, MD

Scott Gazelle, MD

David Rattner, MD

Reorganizing Patient Care and Work

Flow in the Operating Room: a

Cost-Effectiveness Study

Surgery, 2006

Guilherme Schettino, MD, PhD

Neila Altobelli, BA, RRT

Robert Kacmarek, PhD, RRT, FCCM, FCCP, FAARC

Noninvasive Positive Pressure Ventilation

Reverses Acute Respiratory Failure in Select

“Do-Not-Intubate” Patients

Critical Care Medicine

Jesús Villar, MD, PhD, FCCM

Robert Kacmarek, PhD, RRT, FCCM, FCCP, FAARC

Lina Pérez-Méndez, MD, PhD

Armando Aguirre-Jaime, PhD (for the Acute Respiratory Insufficiency “España” Study (ARIES) Network)

A High Positive End-Expiratory Pressure, Low Tidal Volume Ventilatory Strategy Improves

Outcome in Persistent Acute Respiratory

Distress Syndrome. A Randomized

Controlled Trial

Critical Care Medicine

ADVANCING OUR MISSION

VISION AND VALUES

As nurses, health professionals and Patient Care Services support staff, our every action is guided by knowledge, enabled by skill and motivated by compassion. Patients are our primary focus, and the way we deliver care reflects that focus every day.

We believe in creating a practice environment that has no barriers, is built on a spirit of inquiry and reflects a culturally-competent workforce, supportive of the patient-centered values of this institution.

It is through our professional practice model that we make our vision a demonstrable truth every day by letting our thoughts, decisions and actions be guided by our values. As clinicians, we ensure that our practice is caring, innovative, scientific and empowering, and is based on a foundation of leadership and entrepreneurial teamwork.

GUIDING PRINCIPLES — The following values guide our work:

- We are ever alert for opportunities to improve patient care; we provide care based on the latest research findings.
- We recognize the importance of encouraging patients and families to participate in the decisions affecting their care.
- We are most effective as a team; we continually strengthen our relationships with each other and actively promote diversity within our staff.
- We enhance patient care and the systems supporting that care as we work with others; we eagerly enter new partnerships with people inside and outside of the Massachusetts General Hospital.
- We never lose sight of the needs and expectations of our patients and their families as we make clinical decisions based on the most effective use of internal and external resources.
- We view learning as a lifelong process, essential to the growth and development of clinicians striving to deliver quality patient care.
- We acknowledge that maintaining the highest standards of patient care delivery is a never-ending process that involves the patient, family, nurse, all health care providers and the community at large.

STRATEGIC GOALS

- We lead the industry in providing patient- and family-centered care.
- We partner with the community to better understand the health care needs of the diverse population of patients we serve, and to establish a shared vision of care and services.
- We are the health care industry leader for quality and safety.
- We develop and advance systems, technology and programs to promote individualized patient care and support those who provide care.
- We are the “employer of choice” for all professions and support staff, and we value diversity in our workforce.
- We work to promote and support the institution in realizing sound financial growth.
- We position nurses, therapists, social workers, medical interpreters, chaplains and support staff within the hospital to have a strong voice in issues impacting patient care.
- We continuously create throughput systems and processes that drive delivery of safe, efficient, timely and patient-centered care.
- We provide excellent leadership, and we foster leadership growth opportunities.

NURSING DIRECTORS

Cristina Bethune, RN
Electrophysiology Lab

Sharon Bouvier, RN, MS
Vascular Surgery

Susan Caffrey, RN, MS
Labor and Delivery

Theresa Capodilupo, RN, MSN
Surgery/Trauma

Barbara Cashavelley, RN, MSN, AOCN
Cancer Center

Coleen Caster, RN, C, MN, FNP
Gynecology

Scott Ciesielski, RN, MS
Post-Anesthesia Care

Tony DiGiovine, RN, BA
*Transplant, Burn, Plastic and
Reconstructive Surgery*

Beth Ellbeg, RN, MS
Pre-Admission Testing Area

Ellen Fitzgerald, RN, MSN
Oncology/Bone Marrow Transplant

Marion Freehan, RN, MPA/HA, CNOR
Main Operating Rooms

Alice Gervasini, RN, PhD
Trauma Program

Susan Gordon, RN, MS
General Medicine

Marie Henderson, CNM, MSN
Midwifery

Maryfran Hughes, RN, MSN
Emergency Services

Donna Jenkins, MS, RN, CNA, BC
Thoracic Surgery

Stacy Hutton Johnson, RN, MS/MBA
General Medicine

Adele Keeley, RN, MA
*Medical Intensive Care
Interim, Cardiac Surgical Intensive Care*

Linda Kelly, RN
Outpatient Gynecology

Ann Kennedy, RN, MS
Neuroscience

Joanne LaFrancesca, RN, MN, AOCN
Oncology Infusion

Mildred LeBlanc, RN
Radiology

Robin Lipkis-Orlando, RN, MS, CS
Psychiatry

Sara Macchiano, RN, MS, MBA
General Medicine

Bessie Manley, RN, MPA/HA
Medical/Surgical

Catherine Mannix, RN, MSN, OCN
Radiation Oncology

Mary McDonough, RN, MSN
Urology & Enterostomal Therapy

Sharon McKenna, RN
Interventional Cardiovascular Therapy

Brenda Miller, RN, MSN
*Pediatric Intensive Care
and Pediatric Ambulatory Care*

Susan Morash, RN, MA
General Medicine

Lisa Morrissey, RN, MBA, CNOR
Main Operating Rooms

Walter Moulaison Jr., RN, MSN, MBA
Anticoagulation Management Services

Janet Mulligan, RN, MS
IV Therapy

John Murphy, RN, MS
Neuroscience Critical Care

Kathleen Myers, RN, MSN, APRN,
BC, ONC, CNA
Orthopaedics

Hiyam Nadel, RN
Outpatient Obstetrics

Judy Newell, RN
Pediatrics

Claire O'Brien, RN, MBA, CNOR
Orthopaedic Ambulatory Surgery Center

Angelleen Peters-Lewis, RN, PhD
GI Endoscopy

Lori Pugsley, RN, MEd
Family and Newborn

Janet Dauphinee Quigley, RN, MSN
Same Day Surgery

Maureen Schnider, RN, MS, CPHQ
*Central Resource Team, Clinical Supervisors
Interim, Clinical Research*

Peggy Doyle Settle, RN, C, PhD
Newborn Intensive Care

Judy Silva, RN, MSN
*Cardiac Interventional Unit
Interim, Cardiac Surgical Stepdown*

Colleen Snyderman, RN, MSN
Cardiac Intensive Care

Amanda Stefancyk, RN, MSN, MBA
General Medicine

Mary Sylvia-Reardon, RN, MS
Renal

Aileen Tubridy, RN, MSN
Cardiac Stepdown

Susan Tully, RN
Surgical Intensive Care

Maria Winne, RN, MS
General Medicine and Acute Respiratory Care

EXECUTIVE TEAM

Jeanette Ives Erickson, RN, MS
*Senior Vice President for Patient Care
 and Chief Nurse Executive*

Gaurdia Banister, RN, PhD
Executive Director, The Institute for Patient Care

Debbie Burke, RN, MSN, MBA
Associate Chief Nurse

Leila Carbutari, RN, MEd
Director, International Patient Program

Edward Coakley, RN, MEd, MA, MSN
Director Emeritus

Deborah Colton
Vice President of External Affairs MGPO/PCS

Ann Daniels, PhD, LICSW
Executive Director, Social Services, Chaplaincy

Marianne Ditomassi, RN, MSN, MBA
Executive Director, PCS Operations

Theresa Gallivan, RN, MS
Associate Chief Nurse

Eileen Flaherty, RN, MBA, MPH
*Director, Patient Care Services Financial
 Management Systems*

Robert Kacmarek, RRT, PhD,
 FCCM, FCCP, FAARC
Director, Respiratory Care Services

Sally Millar, RN, MBA
*Director, Office of Patient Advocacy
 and Patient Care Information Systems*

Georgia Peirce
*Director, Promotional Communication
 and Publicity*

Keith Perleberg, RN, MDiv
Director, PCS Office of Quality and Safety

George Reardon, MBA
Director, Orthotics and Systems Improvements

Pat Rowell
*Director, Volunteer, Interpreter, Information
 Ambassadors, and General Store Services*

Susan Sabia
Executive Editor, Caring Headlines

Jackie Somerville, RN, PhDc
Associate Chief Nurse

Michael Sullivan, PT, DPT, MBA
*Director, Physical Therapy and Occupational
 Therapy*

Dawn Tenney, RN, MSN
Associate Chief Nurse

Carmen Vega-Barachowitz, MS, CCC-SLP
*Director, Speech, Language & Swallowing
 Disorders and Reading Disabilities*

Deborah Washington, RN, PhDc
Director, Patient Care Services Diversity Program

PATIENT CARE SERVICES ANNUAL REPORT

This annual report is printed on recycled and acid free papers.



MASSACHUSETTS
GENERAL HOSPITAL

PATIENT CARE SERVICES

55 Fruit Street, Bulfinch 230
Boston, MA 02114-2696

FIRST-CLASS
US Postage
PAID
Permit No. 57416
Boston, MA

LENCE • EDUCATION • RESEARCH • COMMUNITY OUTREACH • CLINICAL EXCELLENCE • EDUCATION • RESEARCH • COMMUNITY OUTREACH • CLINICAL EXCELLENCE
OUTREACH • CLINICAL EXCELLENCE • EDUCATION • RESEARCH • COMMUNITY OUTREACH • CLINICAL EXCELLENCE • EDUCATION • RESEARCH • COMMUNITY OU
RESEARCH • COMMUNITY OUTREACH • CLINICAL EXCELLENCE • EDUCATION • RESEARCH • COMMUNITY OUTREACH • CLINICAL EXCELLENCE • EDUCATION • RES
• EDUCATION • RESEARCH • COMMUNITY OUTREACH • CLINICAL EXCELLENCE • EDUCATION • RESEARCH • COMMUNITY OUTREACH • CLINICAL EXCELLENCE • E
CAL EXCELLENCE • EDUCATION • RESEARCH • COMMUNITY OUTREACH • CLINICAL EXCELLENCE • EDUCATION • RESEARCH • COMMUNITY OUTREACH • CLINICAL



The State's First Magnet Hospital
Awarded for Excellence in Nursing

www.mghpcs.org www.massgeneral.org