



CHAPLAINCY



Nearby Houses of Worship

The MGH chapel on the ground floor of the Ellison building is open 24 hours a day, seven days a week, for quiet contemplation and prayer. A schedule of services is posted outside the chapel. For those desiring communal worship, the greater Boston area offers a wealth of denominations and traditions, many housed in buildings of historical significance. The list below is based on proximity to the hospital; locations marked with an asterisk are an easy (less than 10 minute) walk. Because parking is limited, we encourage use of public transportation. We suggest that you check individual Web sites, or call ahead, to confirm service times.

African Methodist Episcopal

St Paul AME Church
Bishop Allen Drive
Cambridge, MA 02139
617-661-1100
T stop: Central Square (Red line)
st-paul-ame.org

Baha'i

Boston Baha'i Community
595 Albany Street
Boston, MA 02118
617-695-3500
bostonbahais.org
T stop: Broadway (Red Line)

Baptist

Tremont Temple
88 Tremont Street
Boston, MA 02108
617-523-2370
tremonttemple.org
T stop: Park Street (Red and Green lines)

Buddhist

A comprehensive list of Buddhist temples and communities is available at pluralism.org

Christian Science

First Church of Christ, Scientist
210 Massachusetts Avenue
Boston, MA 02115
617-450-2000
T stop: Prudential Center (Green line E train)

Congregational/United Church of Christ

Old South Church
645 Boylston Street
Boston, MA 02116
617-536-1970
oldsouth.org
T stop: Copley (Green line)

TREMONT TEMPLE; FIRST CHURCH OF CHRIST, SCIENTIST; OLD SOUTH CHURCH; KING'S CHAPEL



Houses of Worship - Page 2

Ecumenical/ Unitarian Universalist

King's Chapel
Corner Tremont and School Streets
Boston, MA 02111
617-227-2155
kings-chapel.org
T stop: Park Street (Red & Green lines)

Ethical Culture

Spiegel Auditorium
56 Brattle Street
Cambridge, MA 02138
617-739-9050
bostonethical.org
T stop: Harvard Square (Red line)

Evangelical

Park Street Church
One Park Street
Boston, MA 02111
617-523-3383
parkstreet.org
T stop: Park Street (Red & Green Lines)

Episcopal

Church of the Advent*
30 Brimmer Street
Boston, MA 02108
617-523-2377
theadventboston.org
T stop: Charles/MGH (Red line)

Cathedral Church of St. Paul
138 Tremont Street
Boston, MA 02111
617-482-4826
stpaulboston.org
T stop: Park Street (Red line)

Episcopal Boston Chinese Ministry
Cathedral Church of St. Paul
138 Tremont Street
Boston, MA 02111
617-482-4826 x 202 (English)
617-338-2546 (Chinese)
eamchinese.org

Greek Orthodox

Saint Constantine and Helen Greek Orthodox Church
14 Magazine Street
Cambridge, MA 02139
617-876-3601
stsconstantineandhelen-cambridge.org
T stop: Central Square (Red line)

Hindu

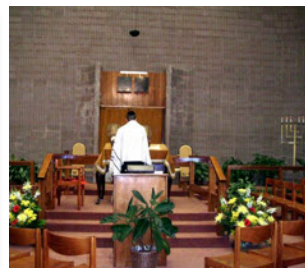
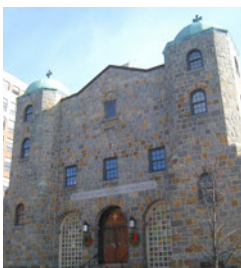
Ramakrishna Vedanta Society
58 Deerfield Street
Boston, MA 02215
617-536-5320
www.vedantasociety.net
T stop: Kenmore Square (Green line)

Temple Iskcon
72 Commonwealth Avenue
Boston, MA 02116
617-247-8611
www.iskconboston.org
T Stop: Copley Square (Green line)

Jehovah's Witness

Kingdom Hall
9 Beach Street
Boston, MA 02140
617-868-5220
watchtower.org
T stop: South Station (Red Line)

SAINT CONSTANTINE AND HELEN; CHURCH OF THE ADVENT; RAMAKRISHNA VEDANTA SOCIETY; BOSTON SYNAGOGUE; CHURCH OF JESUS CHRIST OF LATTER DAY SAINTS



Jewish

The Boston Synagogue*
55 Martha Road
Boston, MA 02114
617-523-0453
bostonsynagogue.org
T stops: Science Park (E train, Green line); North Station (Orange line); Charles/MGH (Red line)

Harvard Hillel
52 Mount Auburn Street
Cambridge, MA 02138
617-495-4696
hillel.harvard.edu
T stop: Harvard Square (Red line)

Latter Day Saints

Church of Jesus Christ of Latter-Day Saints
Two Longfellow Park
Cambridge, MA 02138
617-868-7429
lds.org
T stop: Harvard Square (Red line)

Lutheran

First Lutheran Church of Boston (Missouri Synod)
299 Berkeley Street
Boston, MA 02116
617-536-8851
flc-boston.org
T stop: Arlington or Copley (Green Line)

University Lutheran (ELCA)
66 Winthrop Street
Cambridge, MA 02138
617-876-3256
unilu.org
T stop: Harvard Square (Red line)

Muslim

Islamic Center of Boston
204 Prospect Street
Cambridge, MA 02139
617-876-3546
T stop: Central Square (Red line)

Orthodox Church in America

Holy Trinity Orthodox Cathedral
165 Park Drive
Boston, MA 02215
617-262-9490
holytrinityorthodox.org
T stop: Fenway (Green line)

Pentecostal

Spanish Church of God
738 Parker Street
Roxbury Crossing, MA 02120
617-442-2248
T Stop: Roxbury Crossing (Orange Line)

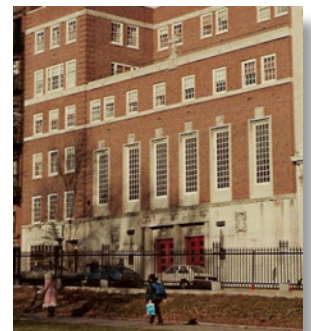
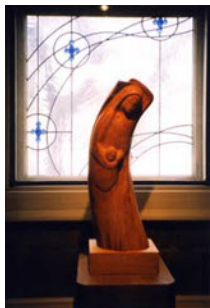
Roman Catholic

St. Angela Merici Parish - Haitian Creole
1548 Blue Hill Avenue
Mattapan, MA 02126-2102
617-298-0080
stangelaparish.org
T stop: Mattapan (Red Line)

St. Joseph's*
68 William Cardinal O'Connell
Boston, MA 02114
617-523-4342
stjosephboston.com
T stop: Charles/MGH (Red line)



UNIVERSITY LUTHERAN CHURCH; HARVARD EPWORTH UNITED METHODIST ; ISLAMIC CENTER OF BOSTON; PAULIST CENTER



Houses of Worship - Page 4

Roman Catholic, continued

Paulist Center
Five Park Street
Boston, MA 02111
617-742-4460
paulistboston.com
T stop: Park Street (Red & Green lines)

Society of Friends

Beacon Hill Friends House*
6 Chestnut Street
Boston, MA 02108
617-227-9118
bhfm.org
T stop: Charles/MGH (Red line)

Swedenborgian

Church on the Hill
140 Bowdoin Street
Boston, MA 02108
617-523-4575
www.churchonthehillboston.org
T stop: Park Street (Red and Green Line)

United Methodist

Old West Church*
131 Cambridge Street
Boston, MA 02114
617-227-5088
oldwestchurch.org

Harvard-Epworth United Methodist Church
1555 Massachusetts Avenue
Cambridge, MA 01238
617-354-0837
gbgm-umc.org
T stop: Harvard Square (Red line)

Unitarian Universalist

Arlington Street Church
351 Boylston Street
Boston, MA 02116
617-536-7050
ascboston.org
T stop: Arlington (Green line)

United Church of Christ/Presbyterian

see also Congregational
Church of the Covenant
67 Newbury Street
Boston, MA 02116
617-266-7480
cotcbos.org
T stops: Arlington or Copley (Green line)

A comprehensive list of area houses of worship can be found at pluralism.org



PARK STREET CHURCH; SOCIETY OF FRIENDS; ARLINGTON STREET CHURCH; OLD WEST CHURCH